

GOODSPEED MUSICALS

2013 SEASON

50th Anniversary

*Frank Loesser's
Musical*

*The Most
Happy
Fella*





**“What we do
is important.”**



Companions & Homemakers™

Home care for older adults.

CompanionsandHomemakers.com

1-800-348-HOME (4663)

CT.DCPHCA.0000101

Get Back in the Game!

Short-term Care • Rehabilitation Services • Home Care



Aaron Manor

Chester, CT
860-526-5316
aaron-manor.net

Greentree Manor Mystic Healthcare

Waterford, CT
860-442-0647
greentree-manor.net

Mystic, CT
860-536-6070
mystichealthcare.net

Lighthouse Home Care

Old Saybrook, CT
860-395-2990
lighthouse-homecare.com

Visit our other Centers located throughout Connecticut:

Bel-Air Manor

Newington, CT
860-666-5689
belair-manor.net

Cheshire House

Waterbury, CT
203-754-2161
cheshire-house.net

Lord Chamberlain

Stratford, CT
203-375-5894
lordchamberlain.net

Ryders Health Management
Nursing & Rehabilitation Centers

www.rydershealth.com

Find us on
Facebook



THE PATH TO
BETTER CARE
BEGINS WITH
A SMARTER CHOICE



The Choice That Leads You
to Middlesex Hospital

middlesexhospital.org

The Smarter Choice for Care
MIDDLESEX HOSPITAL



50th Anniversary

GOODSPEED
MUSICALS®

what's inside

- The Most Happy Fella* | 13
- Cast of Characters | 14
- Synopsis of Scenes & Musical Numbers | 15
- Who's Who | 17
- About Goodspeed Musicals | 26
- History of the Goodspeed Opera House | 27
- The Goodspeed Opera House Foundation | 28
- Corporate Support | 29
- Foundation & Government Support | 30
- Looking to the Future—Leaving a Legacy | 30
- Goodspeed Musicals Staff | 41
- For Your Information | 42

Audio and video recording and photography are prohibited in the theatre.

Please turn off your cell phone, beeper, watch alarm or anything else that might make a distracting noise during the performance. Unwrap any candies, cough drops, or mints before the performance begins to avoid disturbing your fellow audience members or the actors on stage. We appreciate your cooperation.

Editor Lori A. Cartwright



ADVERTISING

OnStage Publications

937-424-0529 | 866-503-1966

e-mail: korlowski@onstagepublications.com

www.onstagepublications.com

This program is published in association with OnStage Publications, 1612 Prosser Avenue, Kettering, OH 45409. This program may not be reproduced in whole or in part without written permission from the publisher. JBI Publishing is a division of OnStage Publications, Inc. Contents © 2013. All rights reserved. Printed in the U.S.A.

Classic chords,
**EXCEPTIONAL
HARMONIES.**

Enjoying the arts adds
vitality to our lives!

More life-enriching
qualities are included in our
HealthyLife™ Services program.

Ask Marian about the
art of senior living at
Chester Village West.
Call (860) 526-6800.



 *A Life Care Services Community*



48535

48535

317 West Main Street
Chester, CT 06412

(860) 526-6800

www.ChesterVillageWestLCS.com



Brushmill

by the Waterfall

fine dining & lounge



open daily

lunch • dinner • sunday brunch

Available for holiday parties,
birthday parties, showers,
rehearsal dinners & weddings

129 West Main Street
Chester, CT 06412

(860) 526-9898

theBrushmill.com



Creating a
stronger community
through art.

Lyme Academy College of Fine Arts is a four-year, nationally-accredited college offering Bachelor of Fine Arts degrees as well as three-year and post-baccalaureate certificates, continuing education and pre-college courses, along with community programs.

Lyme
ACADEMY COLLEGE OF FINE ARTS

860.434.5232 | lymeacademy.edu | 84 Lyme Street Old Lyme, CT 06371

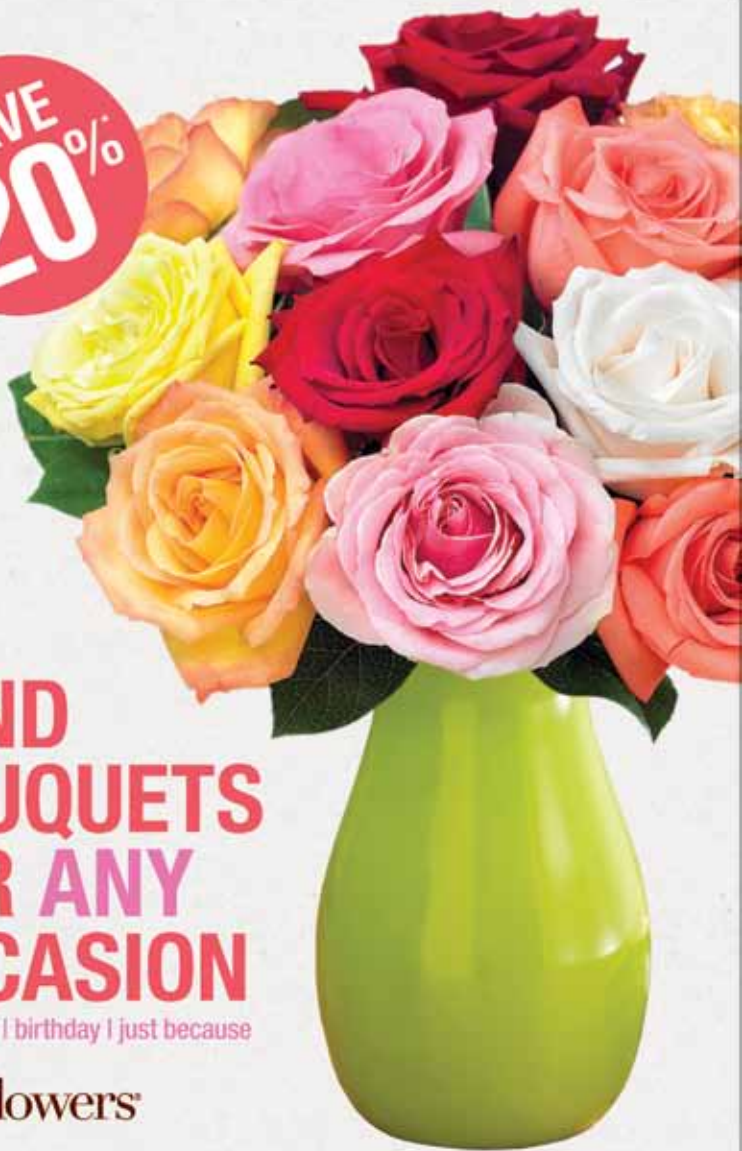


Like us on Facebook | Lyme Academy College of Fine Arts



Follow us on Twitter: @LymeAcademy

SAVE
20%



SEND BOUQUETS FOR ANY OCCASION

anniversary | birthday | just because

ProFlowers®

Hurry! Order now for unbelievable low prices, with flowers from \$19.99*^{+/fl}

Visit www.ProFlowers.com/superb or call 888.706.1389

Join Over 12 Million People Who Have Found a Better Way to Send Flowers

*20% off discount will appear upon checkout. Minimum purchase of \$29.00. Does not apply to gift cards or certificates, same-day or international delivery, shipping and handling, taxes, or third-party hosted products (e.g. wine) and cannot be combined with other offers or discounts. Discounts not valid on bulk or corporate purchases of 10 units or more. Offer expires: 11/15/13.



The Greater Middletown Concert Association

is bringing

The Connecticut Lyric Opera and The Connecticut Virtuosi Chamber Orchestra with their live, fully-staged 2013-14 Series of three operas;

Saturday, November 2nd, 7:30 p.m.

Sunday, January 26th, 3:00 p.m.

Friday, May 23rd, 7:30 p.m.

1

Wagner's "Der Fliegende Holländer"
("The Flying Dutchman")
(Sung in the original language with English translation projected above the stage)

2

Ullman's "The Emperor of Atlantis"
allegory opera written by the Jewish composer/ conductor in World War II at a concentration camp

3

Puccini's "Madama Butterfly"
(Sung in the original language with English translation projected above the stage)

at the new state-of-the-art 700-seat auditorium

MHS PERFORMING ARTS CENTER • 200 LaRosa Lane, Middletown

For tickets and information **CALL NOW: 860-347-4887 or 860-346-3369**

Series tickets (...includes the 3 operas) = \$90 (front) and \$85 (rear)

Individual tickets (...includes only 1 opera) = \$40 (front) and \$35 (rear)

www.GreaterMiddletownConcerts.org

Visit and Experience a **REAL** Toy Store in the **Heart** of Middletown



395 MAIN ST, MIDDLETOWN

860-347-1893 • www.AmatosMiddletown.com

You will find a huge selection of quality Toys, Family Games, Model Trains, Dolls, Arts & Crafts, Books, Models, Puzzles and more!

Let our friendly staff assist you in choosing the perfect gift!

Bring the family to our Operating Model Train displays!

Check our website for operating times.

- Open 7 days a week • Free Gift Wrapping •

Family owned & operated • Making Connecticut Families Happy since 1940



Ellen ~ Ashlar Village resident since 2011

Take center stage

*at Connecticut's most
welcoming continuing care
retirement community.*

Welcome to Masonicare at Ashlar Village, a vibrant community located on 168 scenic acres in Wallingford. Here you'll find a variety of accommodations and seamless, easy access to all the amenities and healthcare you need to live confidently and carefree.

Explore us in person and discover all that we offer. Schedule a personal tour or register for an upcoming Open House — and you'll see why residents like Ellen say, "*Masonicare is Here for Me.*"

 **Masonicare**
at Ashlar Village 



www.masonicare.org
HelpLine 1-888-679-9997

FIND ALL OF YOUR PERFORMING ARTS IN ONE SPOT



ARTSFREEPRESS

Your Arts. Your Reviews.

THEATRE & STAGE SYMPHONY & CLASSICAL POPS BALLET OPERA SPECIAL EVENTS GALAS & FUNDRAISERS

Event Name, Venue or Location SEARCH

GET OFFERS & UPDATES

SPECIAL OFFERS EVENT REMINDERS REVIEW EVENTS

SIGN UP

ALL DATES



CLASSIC MASTERWORKS
Your Symphony Orchestra

PROGRAM NOTES BUY TICKETS

SHOW INFORMATION



PATTI AUSTIN
Your Symphony Orchestra

PROGRAM NOTES BUY TICKETS

SHOW INFORMATION



COLIN MOCHRIE & BRAD SHERWOOD
Your Center for The Performing Arts

PROGRAM NOTES BUY TICKETS

SHOW INFORMATION

See all upcoming performances beautifully displayed within 90 miles of your current location

Get program notes on your mobile device while at the performance



KORESH DANCE COMPANY
Your Symphony

PROGRAM NOTES BUY TICKETS

SHOW INFORMATION



PETER PAN
Your Theater

PROGRAM NOTES BUY TICKETS

SHOW INFORMATION



RHAPSODY IN BLUE
Your Symphony Orchestra

PROGRAM NOTES BUY TICKETS

SHOW INFORMATION

Buy tickets directly from the venue

Get reminded of upcoming shows that you are interested in



THE MOST COMPLETE EVENTS CALENDAR IN THE WORLD

BROUGHT TO YOU BY ONSTAGE PUBLICATIONS

www.artsfreepress.com

TRY IT NOW ON YOUR MOBILE PHONE

PASTA VITA



The Place to Go for Gourmet to Go
HOURS:

Monday-Friday 8-6

Saturday 8-5:30

860-395-1452

pastavita.com



Old Saybrook, CT

Audi
Truth in Engineering



When it comes to attraction,
it usually starts with the eyes.

The unrivaled Audi A4 is here.

Starting at \$32,500*



Hoffman
Driven by trust.™

Hoffman Audi
East Hartford // New London
hoffmanaudiolondon.com /
hoffmanaudiohartford.com

*Prices listed are the Manufacturer's Suggested Retail Price for the vehicle and options chosen by you. These prices do not include transportation, taxes, title, other options, dealer installation costs, or other dealer charges. Dealers set actual prices.



**The Pursuit of
Perfect Sound.**

Sennheiser has been a leader in headphone and microphone technology for nearly 70 years, advancing the science of sound every minute and every hour since 1945.

www.SennheiserUSA.com

Like us on facebook:
www.facebook.com/SennheiserUSA

 **SENNHEISER**
The Pursuit of Perfect Sound

Bishopsgate Inn



Built in 1818 by Horace Hayden, a merchant and shipbuilder, this is an exceptional historic Colonial. The Kagel family welcomes guests, with gracious hospitality, to their beautifully appointed home.

Just a short walk to the Goodspeed

Visit us at:

Bishopsgate.com

860-873-1677

Wireless Internet / Cable TV / AC

Full breakfast

We couldn't be any more proud of this connection.

Proud supporter of
Goodspeed Musicals.

UNITED



A STAR ALLIANCE MEMBER





Frank Loesser's
Musical

The Most Happy Fella

Based on Sidney Howard's "They Knew What They Wanted"

Book, Music and Lyrics by
FRANK LOESSER

with

**NOAH ABERLIN MATTHEW AMIRA ANN ARVIA ELIZABETH ANN BERG DANIEL BERRYMAN
DOUG CARPENTER VICTORIA CASTLE CHRISTINE CORNELL SETH DANNER MICHAEL DELEGET
NATALIE HILL ELOISE KROPP DANNY LINDGREN SABRINA MARLENE BILL NOLTE
MAMIE PARRIS JOHN PAYONK RACHEL RHODES-DEVEY GREG RODERICK MARTÍN SOLÁ
SARAH TRANCHINA ERIC ULLOA KEVIN VORTMANN JAMES ZANNELLI**

Scenic Design by
MICHAEL SCHWEIKARDT

Costume Design by
THOMAS CHARLES LeGALLEY

Lighting Design by
JOHN LASITER

Sound Design by
JAY HILTON

Wig & Hair Design by
MARK ADAM RAMPMEYER

Orchestrations by
DAN DeLANGE

Assistant Music Director
WILLIAM J. THOMAS

Production Manager
R. GLEN GRUSMARK

Production Stage Manager
BRADLEY G. SPACHMAN

Casting by
**STUART HOWARD &
PAUL HARDT**

Associate Producer
BOB ALWINE

Line Producer
DONNA LYNN COOPER HILTON

Music Director
MICHAEL O'FLAHERTY

Choreographed by
PARKER ESSE

Directed by
ROB RUGGIERO

Produced for Goodspeed Musicals by
MICHAEL P. PRICE

First Performance: September 20, 2013 at the Goodspeed Opera House

The Most Happy Fella is presented through special arrangement with Music Theatre International (MTI).
Marquee Producing Partners **LUCILLE and DAVID VIOLA, SR.**

Sponsored by:



**Connecticut
Light & Power**

The Northeast Utilities System



SENNHEISER

Official Audio Sponsor of Goodspeed Musicals

UNITED

Official Airline of Goodspeed Musicals

Department of Economic and
Community Development

Office of the Arts

Connecticut
still revolutionary



CAST OF CHARACTERS

Cashier **JAMES ZANNELLI**
Cleo **NATALIE HILL**
Rosabella **MAMIE PARRIS**
Postman **JOHN PAYONK**
Tony **BILL NOLTE**
Marie **ANN ARVIA**
Herman **KEVIN VORTMANN**
Clem **NOAH ABERLIN**
Jake **DANNY LINDGREN**
Al **ERIC ULLOA**
Joe **DOUG CARPENTER**
Pasquale **MARTÍN SOLÁ**
Giuseppe **GREG RODERICK**
Ciccio **DANIEL BERRYMAN**
Doc **MICHAEL DELEGET**

ENSEMBLE

NOAH ABERLIN ELIZABETH ANN BERG VICTORIA CASTLE CHRISTINE CORNELL
SETH DANNER MICHAEL DELEGET ELOISE KROPP DANNY LINDGREN JOHN PAYONK
RACHEL RHODES-DEVEY SARAH TRANCHINA ERIC ULLOA JAMES ZANNELLI

SWINGS

MATTHEW AMIRA SABRINA MARLENE

DIALECT COACH

GILLIAN LANE-PLESCIA

DANCE CAPTAIN

ELOISE KROPP

ASSISTANT STAGE MANAGER

HEATHER KLEIN

UNDERSTUDIES

Tony **JOHN PAYONK**; Rosabella **ELIZABETH ANN BERG**; Marie **VICTORIA CASTLE**;
Joe **ERIC ULLOA**; Cleo **RACHEL RHODES-DEVEY**; Herman, Ciccio **DANNY LINDGREN**;
Pasquale **JAMES ZANNELLI**; Giuseppe **MICHAEL DELEGET**

ORCHESTRA

Conductor/Keyboard I **MICHAEL O'FLAHERTY**; Keyboard II **WILLIAM J. THOMAS**;
Reeds **LIZ BAKER SMITH**; Trumpet **MARK SLATER**; Percussion **SALVATORE RANNIELLO**;
Violin **KARIN FAGERBURG**; Cello **JULIE RIBCHINSKY**

ALTERNATES

Conductor/Keyboard I **WILLIAM J. THOMAS**; Keyboard II **MOLLY STURGES, DAVID KIDWELL**;
Reeds **MICHAEL SCHUSTER**; Trumpet **PETE ROE, LARRY GAREAU**; Percussion **STEVE COLLINS,**
DAVE EDRICKS; Violin **DIANE ORSON, A. GABRIEL KASTELLE**; Cello **CELESTE CUMMING**



SYNOPSIS OF SCENES & MUSICAL NUMBERS

San Francisco & Napa, California—early 1950s

ACT ONE

Scene 1, San Francisco, the Golden Gate Restaurant, January

<i>Oooh, My Feet!</i>	Cleo
<i>I Know How It Is</i>	Rosabella & Cleo
<i>Somebody, Somewhere</i>	Rosabella

Scene 2, Main Street, Napa, California, April

<i>The Most Happy Fella</i>	Postman, Tony & Townsfolk
<i>I Don't Know Nothin' About Her</i>	Tony & Marie
<i>Standing on the Corner</i>	Herman, Jake, Clem & Al
<i>Joey, Joey, Joey</i>	Joe
<i>Rosabella</i>	Tony

Scene 3, The Yard Outside Tony's House, a few weeks later

<i>Abbondanza</i>	Giuseppe, Ciccio, & Pasquale
<i>Plenty Bambini</i>	Tony
<i>Sposalizio</i>	Giuseppe, Ciccio, Pasquale, & Townspeople
<i>Benvenuta</i>	Giuseppe, Ciccio, & Pasquale
<i>Aren't You Glad</i>	Rosabella
<i>Eyes Like a Stranger</i>	Marie
<i>Don't Cry</i>	Joe & Rosabella

INTERMISSION

ACT TWO

Scene 1, A Clearing in the Vineyard, One Week Later

<i>Fresno Beauties</i>	Workers, Joe & Rosabella
<i>Love and Kindness</i>	Doc
<i>Happy to Make Your Acquaintance</i>	Rosabella, Tony & Cleo
<i>Big 'D'</i>	Cleo, Herman & Workers

Scene 2, The Yard, a little later in May

<i>How Beautiful the Days</i>	Tony, Rosabella, Marie & Joe
-------------------------------------	------------------------------

Scene 3, The Yard, a month later

<i>Young People</i>	Marie
<i>Warm All Over</i>	Rosabella & Tony

Continued on next page



SYNOPSIS OF SCENES & MUSICAL NUMBERS

Scene 4, Inside the Barn

I Like Ev'rybody.....Herman & Cleo

Scene 5, The Yard, an afternoon in July

Like a Woman Loves a Man.....Rosabella & Tony

My Heart is So Full of You.....Tony & Rosabella

Sposalizio (Dance).....Rosabella & Townspeople

Mamma, Mamma.....Tony

Scene 6, Inside the Barn

I Like Ev'rybody (Reprise).....Cleo & Herman

Scene 7, The Yard

Song of a Summer Night.....Doc & Townspeople

Please Let Me Tell You.....Rosabella

Scene 8, Main Street, Napa

She Gonna Come Home Wit' Me.....Tony, Marie & Cleo

Finale.....Tony, Rosabella & Company

There will be a 15-minute intermission between acts.

Please turn off your cell phone, beeper, watch alarm or anything else that might make a distracting noise during the performance. Unwrap any candies, cough drops, or mints before the performance begins to avoid disturbing your fellow audience members or the actors on stage.

Out of respect for our actors and your fellow theatergoers, we ask that you remain seated until the curtain calls are over and the house lights have come up.

We appreciate your cooperation.

Audio and video recording and photography are prohibited in the theatre.



WHO'S WHO



ANN ARVIA* (*Marie*) Broadway: *Mary Poppins* (Bird Woman), *Les Misérables* (Mme. Thenardier), *Beauty and the Beast* (u/s Mrs. Potts/Mme. de la Grande Bouche). Off-Broadway: *Time and Again* (Manhattan Theatre Club), *Children & Art: Stephen Sondheim's 75th Birthday Celebration* (soloist), National Tours: *Ragtime*, *Les Misérables*. Regional: *Gypsy* (Rose), *Ragtime* (Mother), *Rags* (Rebecca), *Happy End* (Lillian), *The Sound of Music* (Mother Abbess), *The King & I* (Lady Thiang), *Phantom of the Opera* (Carlotta), *Titanic* (Alice Beane), *Footloose* (Vi Moore), *Company* (Sarah). Film/TV: *Man on a Ledge*, *3 Backyards* (Sundance 2010), *Let it Snow* (Sundance 2000), *Rescue Me*, *Nurse Jackie*, *The Big C*, *Law & Order: SVU*, and *Made in Jersey*.



DANIEL BERRYMAN* (*Ciccio*) is thrilled to be making his debut at the Goodspeed! Most recently, Daniel spent the summer in Colorado with Theatre Aspen performing Marius in *Les Misérables* and Charlie Brown in *You're a Good Man, Charlie Brown*. Other theatre credits include Mark Cohen in *Rent* at 5th Avenue Theatre, Seattle; Mr. Erlanson in *A Little Night Music* at the Indiana Repertory Theatre; Freddie Eynsford-Hill in *My Fair Lady* at the Heritage Theatre Festival, Charlottesville, Virginia. Thanks to Jesus, wife, family, and friends for their love and support and to the guys at CGF for their encouragement. Love you all!



DOUG CARPENTER* (*Joe*) Education: BM in Voice from UNLV, MM in Voice from UCLA. Regional: Lancelot in *Camelot* (Pasadena Playhouse), Curly in *Oklahoma* (Pennsylvania Shakespeare, FCLO), Tony in *West Side Story* (FCLO), Thief in *See What I Wanna See* (Blank Theatre), Prince in *Cinderella* (CLOSBC), Chris in *Miss Saigon* (Moonlight Amphitheater), Curtis in *Summer of Love* (Ogunquit Playhouse), and Joey in *The Most*

Happy Fella (Dallas Lyric Stage). NYC Theatre: Mr. Darcy in *Jane Austen's Pride and Prejudice* (NYMF), Skip in *Life Could Be A Dream* (LA Weekly, LADCC Winner, NYMF). Doug is the only singer to win both the American Traditions Competition (2011) and the Lotte Lenya Competition.



NATALIE HILL* (*Cleo*) is happy to return to Goodspeed where she earned her Equity Card in *Brigadoon* and appeared in *Camille Claudel* (Chester). Broadway: *Wonderland* (OCR), *Bye Bye Birdie* (Rosie u/s opposite John Stamos), *Grease* (Cha Cha, OCR). Las Vegas: *Jersey Boys* (Mary Delgado), *Footloose* (Rusty). National Tours: *The Grinch* (Mama Who, Madison Square Garden/WANG); *Joseph...Dreamcoat* (Narrator opposite Patrick Cassidy), *Hairspray*. Regional: *In the Heights* (Daniela), *Miss Saigon* (Ellen) at Pioneer; *Romeo and Bernadette* (Bernadette, Paper Mill and Coconut Grove—Carbonel nomination); *Les Misérables in Concert* (Eponine, SCERA), *Joseph...* (Narrator, NSMT). VO: *The Swan Princess 5* (singing voice of Princess Odette). For Syd and family. @nataliekhill.



BILL NOLTE* (*Tony*) Goodspeed: Don Quixote, *Man of La Mancha* 2000; Beadle Bamford, *Sweeney Todd*, 1997. Recent: Jacob/Potiphar/Baker in *Joseph and the Amazing Technicolor Dreamcoat*, Ogunquit Playhouse; Professor Marvel/Guard/Wizard in *The Wizard of Oz*, Sacramento Music Circus; Tevye in *Fiddler on the Roof*, Westchester Broadway Theatre; Tony in *The Most Happy Fella*, Dallas' Lyric Stage; Fuzz in *Harmony*, *Kansas* (American Premiere), San Diego's LGBT Diversionary Theatre. Broadway: *The Producers*, *Amour*, *Jane Eyre*, *1776*, *A Christmas Carol*, *King David*, *Joseph...Dreamcoat*, *The Secret Garden*, *Me and My Girl*, *La Cage aux Folles* (Revival), *Cats* ('85 debut). Bill is also an accomplished watercolorist and Tommy Award-winning textile designer. To learn more visit: <http://www.billnolte.com>.

*Member of Actors' Equity Association, the Union of Professional Actors and Stage Managers in the United States.



WHO'S WHO



MAMIE PARRIS* (*Rosabella*) A native Texan, Mamie attended Paseo Academy of the Arts in Kansas City, Missouri before graduating from the American Musical and Dramatic Academy in New York City. Broadway and National Tours include *Wicked* (Elphaba, 1st National), *9 to 5 The Musical* (Judy Bernly, 1st National), *Ragtime* (2009 Revival), *The Drowsy Chaperone*, *Legally Blonde*, *110 in the Shade* (Roundabout revival). Mamie created the role of Dodi in the new Off-Broadway musical *See Rock City & Other Destinations* (cast album just released!). Numerous regional roles, concerts, and readings. Thank you Rob and all at Goodspeed, SH Entertainment, Pete and The Talent House, and my Johnathan.



GREG RODERICK* (*Giuseppe*) Previous Goodspeed productions: *Show Boat* (2011), *1776* (2007), *King of Hearts* (2002), *A Little Night Music* (2001), and *Brigadoon* (2001). Broadway: *South Pacific* (Lincoln Center), *Ragtime* (15th Anniversary Concert at Lincoln Center); Off-Broadway: *Barcode* (NY Int'l Fringe Festival), *Is There Life After High School?* (York), *The Butterfly* (Mint); Tours: Lincoln Center's *South Pacific*, *Parade* (dir. Harold Prince), and *Sound of Music* and numerous regionals, including Paper Mill, The Muny, TOTS, TUTS, Pittsburgh Public, Maltz Jupiter and Northern Stage. www.gregroderick.net



MARTÍN SOLÁ* (*Pasquale*) is thrilled to be making his debut with Goodspeed Musicals. He has appeared on Broadway in *Coram Boy*, Baz Luhrmann's *La Bohème*, and *The King and I*. Other New York credits include *Pipe Dream* and *Fanny* with City Center Encores; Michael John LaChiusa's *Giant*, the *The Pirates of Penzance* Gala in the Park, and the 2012 Shakespeare Lab with The Public Theater; as well as more than a dozen productions with The New York City Opera. Martín has made numerous television appearances singing for Andrea Bocelli, and this fall he will appear in the new CBS series *Hostages*.

*Member of Actors' Equity Association, the Union of Professional Actors and Stage Managers in the United States.



KEVIN VORTMANN* (*Herman*) makes his Goodspeed debut in *The Most Happy Fella!* Broadway: *A Little Night Music*. Off-Broadway: *Death Takes a Holiday*, *On the Town*, *Applause*, *Face the Music*, *Fiorello*, *Lost in the Stars*, *Stairway to Paradise*, *Juno*, and *For Lovers Only*. Carnegie Hall: Leonard Bernstein's *Mass*, *Show Boat*, and *Mother Russia*. Other favorites: *Miss Saigon* (Chris), *Guys and Dolls* (Sky Masterson), *Next to Normal* (Dan), and *Les Misérables* (Enjolras). Kevin has been a soloist with the San Francisco Symphony, Baltimore Symphony Orchestra, and with Omaha Symphony. Love and thanks to his beautiful wife, Amanda, and to his supportive family. www.kevinvortmann.com



NOAH ABERLIN* (*Ensemble*) is very excited to be returning to Goodspeed! He was last here in *Annie Get Your Gun*. Previous regional and touring credits include *Young Frankenstein* (National Tour), *The Wizard of Oz* (National Tour), *Candide* (NYC Opera), *The Producers* (National Tour), *Irving Berlin's White Christmas* (Denver Center), *Carnival!* (Paper Mill). He is a Brooklyn, NY native and holds a BFA in Musical Theatre from Syracuse University. Thanks to M&D, P.J, Mila, Nick, Rob, and TKO!



ELIZABETH ANN BERG* (*Ensemble*) is thrilled to return to Goodspeed, where she was last seen in Rob Ruggiero's *Show Boat*. Tours: *Mary Poppins*, Regional: *Hello! My Baby* (Goodspeed's Festival of New Artists), IRNE award-winning *Into the Woods*, *Company* (April), *A Class Act* (Sophie). BFA Boston Conservatory. Love and thanks to Abrams and my family.



VICTORIA CASTLE* (*Ensemble*) is a singer, actress, pianist, and musical director. This season, she musically directed *The Taffettas* and *They're Playing Our Song* at The Theater Barn in the Berkshires. Earlier this year, she



WHO'S WHO

was seen Off-Broadway in the one-act play *The Invention of the Living Room* at Metropolitan Playhouse in New York City. And she will soon be seen in the indie thriller film *Of Sound Mind*. Web series include *City of Dreams*, *Ladies and Gentlemen*, and *Unlikely Allies*.



CHRISTINE CORNELL (*Ensemble*) is thrilled to be making her Goodspeed debut! She was last seen in the premiere of *Laquearia* (Edinburgh Fringe) and as Sophie in *Masterclass* (Gulfshore). Other credits include *The Sound of Music* (Paper Mill), M. F. K. Fisher in *The Art of Eating*, Buffy in the collegiate premiere of Bolcom's *A Wedding*, Mark Morris's *Four Saints in Three Acts*, and Peggy Sawyer in *42nd Street*. She sends love to her supportive family and friends.



SETH DANNER* (*Ensemble*) is thrilled to be making his Goodspeed debut! Seth was just seen as Duke in *The Great American Trailer Park Musical* at Merry-Go-Round Playhouse. Other recent credits: *Peter Pan* (Northern Stage), *How to Succeed...* (Arts Center of Coastal Carolina), *A Chorus Line* (National & Japanese Tours). Look for Seth in the upcoming film *Other Plans*, starring Jamie Kennedy. BFA in Musical Theatre from Syracuse University. Many thanks to Paul, Craig, Rob, and Parker, and lots of love to his family and Anthony.



MICHAEL DELEGET* (*Ensemble*) is thrilled to be returning to Goodspeed. He was last seen here in *Camelot*. Degrees from Wabash College and Indiana University. He just finished playing Lt. Cable in *South Pacific* at Surfflight. Past productions: Giuseppe, *The Most Happy Fella* starring George Hearn (Ravinia); Jamie, *The Last Five Years* (Skylight Music Theatre); Tony, *West Side Story* (Maine State); Atlanta TOTS's touring production of *Les Misérables*. Other credits: Bernstein's *Mass*, Carnegie Hall and the Vatican (DVD). Love always to Alison.



ELOISE KROPP* (*Ensemble*) is excited to be back at Goodspeed Opera House. NY: *Tuck Everlasting*. Favorite Regional credits: Louise in *Carousel* (Goodspeed), June in *Gypsy* (Music Theatre Wichita), and Amber in *Hairspray* (Lyric Theatre Oklahoma). Love and thanks to her family, CGF, ARR, JBR, Parker, and Peggy!



DANNY LINDGREN (*Ensemble*) is thrilled to make his Goodspeed debut! New York: *Parade* (Tom Watson). Regional: *A Christmas Carol* (Fred), *Camelot* (Ensemble), *The Flying Dutchman* (Ensemble), *The Taming of the Shrew* (Tranio), *Romeo & Juliet* (Samson), *Rent* (Roger), *A Chorus Line* (Don). Graduate of Ithaca College. Many thanks to the *Most Happy Fella* team, friends, and family.



JOHN PAYONK* (*Ensemble*) has performed such varied roles as Germont in *La Traviata*, Scarpia in *Tosca*, Tonio and Canio in *I Pagliacci*, Sharpless in *Madama Butterfly*, Tony in *The Most Happy Fella*, Old Deuteronomy in *Cats*, Captain E.J. Smith in *Titanic*, Edna Turnblad in *Hairspray*, Professor Callahan in *Legally Blonde The Musical*, Kris Kringle in *Miracle on 34th Street*, Tevye in *Fiddler on the Roof*, and the title roles in *Rigoletto*, *Don Pasquale*, and *Falstaff*.



RACHEL RHODES-DEVEY* (*Ensemble*) is thrilled to be making her debut at Goodspeed Opera House! She was last seen in Lincoln Center's concert of *Carousel* with the New York Philharmonic, which aired on PBS as part of *Live From Lincoln Center*. Other credits include the 2nd National Tour of Lincoln Center's *South Pacific* and regional productions with Maine State Music Theatre, Gateway Playhouse, and The John Engeman Theatre. Proud OCU graduate. She is incredibly thankful for the support of her family, friends, and the gang at Judy Boals, Inc. www.RachelRhodesDevey.com.

**Member of Actors' Equity Association, the Union of Professional Actors and Stage Managers in the United States.*



WHO'S WHO



SARAH TRANCHINA (*Ensemble*) is so thrilled to be a part of this wonderful production! Past credits include the National/International Tours of *Shrek The Musical* (Shoemaker's Elf/Dragon Puppeteer) and Disney Cruise Line.

Favorite roles include *The Wedding Singer* (Linda); *You're a Good Man, Charlie Brown* (Lucy); and *Beauty and the Beast* (Silly Girl), to name a few. BA Wagner College Theatre. So many thanks to all involved at Goodspeed Musicals!



ERIC ULLOA* (*Ensemble*) is thrilled to be here and check "Goodspeed" off the life goal list. Eric has performed at North Shore Music Theatre, Signature Theatre, Fulton Opera House, Arvada Center, Riverside Theatre, North Carolina Theatre, The Human Race Theatre Company, Lyric Theatre of Oklahoma, and many others. As a writer, Eric is the librettist of the musicals *Molly Sweeney* and *The Boardwalk Boys*. Eric is also the author of the play *26 Pebbles*. All the love and thanks go to the Krasny Office, Rob, Parker, MOF, and his incredible family. Wanna learn more? www.ericulloa.com



JAMES ZANNELLI* (*Ensemble*) is excited to make his Goodspeed debut. Tours: *Les Misérables*. The New 25th Anniversary Production (Bishop of Digne, Thenardier cover). Regional favorites: *Les Misérables* (Thenardier) at Tuacahn Amphitheater, *Jesus Christ Superstar* (Caiaphas) at PCLO and KS City Starlight, *Chess* (Molokov) at NCT, *Jekyll & Hyde* (Simon Stride) at J. W. Engeman and NCT, *Tommy* (Uncle Ernie) at Hilton Head, *Peter Pan* (Hook) at Media Theatre, *Pirates of Penzance* (Boatswain cover) with Santa Fe Opera.



MATTHEW AMIRA (*Swing*) is thrilled to be making his Goodspeed debut! Most recently, he was seen as Kodaly (*She Loves Me*) at the Infinity Theatre. Regional includes Perchik (*Fiddler on the Roof*), Snowy (*Honk!*), and

Aaron Shultz (*Legally Blonde*) at Music Theatre of Wichita. At CCM, he was seen as Macheath (*The Threepenny Opera*), Rapunzel's Prince (*Into the Woods*), and Pierce (*The Civil War*). He holds a BFA from the Cincinnati College-Conservatory of Music. Love to Kathryn, friends, family, and the Lookers! Appearing courtesy of Actors' Equity Association.



SABRINA MARLENE (*Swing*) After moving to NYC in March and working on TV and film, Sabrina is thrilled to be joining the company of *The Most Happy Fella*. Favorite Regional credits include *Oklahoma!* (Laurie), *The Wizard of Oz* (Glenda, Aunt Em), *Hairspray* (Shelly, Amber u/s), Virginia Opera's *The Magic Flute* (Spirit). BFA Elon University. Loads of love to the whole Fam Damily, Mom, Dad, Chase I love you!!

FRANK LOESSER (*Book, Music and Lyrics*) Loesser's five Broadway musicals—*Where's Charley?*, *Guys and Dolls* (Tony Award), *The Most Happy Fella*, *Greenwillow*, and *How to Succeed in Business Without Really Trying* (Pulitzer Prize)—stand as unique contributions to the art of musical theatre. Before his Broadway success, Loesser was known for the dozens of hit songs from his work in Hollywood, where he supplied lyrics to the music of Jule Styne, Hoagy Carmichael, Burton Lane, and Arthur Schwartz, among others, producing such hits as "I Don't Want to Walk Without You," "Heart and Soul," "They're Either Too Young or Too Old," and, with his own music, "Spring Will Be a Little Late This Year," "On a Slow Boat to China," and the Oscar-winning "Baby, It's Cold Outside." The biography *A Most Remarkable Fella*, by his daughter Susan Loesser, is published by Hal Leonard Corporation. *Heart & Soul: The Music & Lyrics of Frank Loesser* is available on DVD from Final Cut Productions.

ROB RUGGIERO (*Director*) is thrilled to be returning to Goodspeed this season, after having directed past productions of *1776*, *Big River*, *Camelot*, *Annie Get Your Gun*, *Show Boat*, and last season's highly praised production of *Carousel*. His Broadway credits include *Looped* (starring Valerie Harper in a Tony-nominated performance)

*Member of Actors' Equity Association, the Union of Professional Actors and Stage Managers in the United States.



WHO'S WHO

and *High* (starring premier and screen star Kathleen Turner), which premiered here in Connecticut. Other New York credits include *All Under Heaven* (also starring Valerie Harper), as well as conceiving and directing the original musical revue *Make Me a Song: The Music of William Finn* (Drama Desk Award and the Outer Critics Circle Award nominations). Regionally, Mr. Ruggiero has earned national recognition for his work on both plays and musicals, having received numerous awards including multiple Connecticut Critics Circle Awards and a Joseph Jefferson Award in Chicago; he currently has the distinction of being the only director to have received four Kevin Kline Awards in St. Louis. Connecticut audiences are also familiar with Mr. Ruggiero's work through his association with TheaterWorks in Hartford, where he was recently appointed the new Producing Artistic Director. He has been a key partner in the artistic leadership there since 1993. He conceived and directed the highly successful *Ella* (Kevin Kline and Joseph Jefferson Awards) at TheaterWorks, which has been produced at over twenty major regional theaters around the country. He recently directed productions of *South Pacific* at The MUNY and *Time Stands Still* at TheaterWorks. Upcoming projects include a new production of *Show Boat* at The Asolo this fall. www.robruggiero.com

PARKER ESSE (*Choreographer*) is honored to return to Goodspeed after choreographing *Carousel* last season (Connecticut Critics Circle Nomination and Choreographer of the Year accolades, BroadwayWorld). Recently choreographed *Guys and Dolls* to international acclaim at Shaw Festival Canada. Choreographed several productions for Arena Stage, including nationally acclaimed *Oklahoma!* (Helen Hayes Award) and *The Music Man* (Helen Hayes Nomination). Broadway: Associate Choreographer contributing on *A Tale of Two Cities*; Tony-nominated *Finian's Rainbow*. Currently choreographing *A Bed and A Chair: A New York Love Affair*, presented by City Center's Encores! and Jazz at Lincoln Center with Wynton Marsalis, Stephen Sondheim, and John Doyle.

MICHAEL O'FLAHERTY (*Music Director*) is in his 22nd season as Goodspeed's Resident Music

Director. Broadway: *By Jeeves*, *Gentlemen Prefer Blondes*, *A Streetcar Named Desire*. Also: Paper Mill Playhouse, North Shore Music Theatre, Playwrights Horizons, Ford's Theatre, The Brooklyn Academy of Music, The Kennedy Center, Pittsburgh Public Theatre, and the Smithsonian Institution. Musical Supervisor and Cabaret Director of the Williamstown Theatre Festival for 11 years. His original musical, *Genesius*, for which he wrote music and lyrics, was recently showcased in NYC.

MICHAEL SCHWEIKARDT (*Scenic Design*) For Goodspeed Musicals: *Carousel*, *Show Boat*, *Hello! My Baby*, *Annie Get Your Gun*, *1776*, *Big River*, *Camelot*. World premieres of *Nobody Loves You* and Duncan Sheik's *Whisper House* at The Old Globe. *Motherhood The Musical*, G4 Productions. *Ella*, a musical about Ella Fitzgerald, appearing in cities all across the country. *Bloodsong of Love*, Ars Nova. *Barnum*, The Asolo. American premieres of Frank McGuinness' *Gates of Gold* and *The Bird Sanctuary*. *Oklahoma!* starring Kelli O'Hara and Will Chase, and National and International Tours of James Taylor's *One Man Band*. www.msportfolio.com

THOMAS CHARLES LeGALLEY (*Costume Design*) Broadway: *Lysistrata Jones*; Associate Design, *Kinky Boots*. Regional: Hartford Stage: *The 39 Steps*, *Boeing Boeing*; Dallas Theater Center: *Next Fall*, *God of Carnage*; La Jolla Playhouse: *Frida Libre*. Assistant /Associate: Off-Broadway: *The Orphans' Home Cycle*, *The Milk Train Doesn't Stop Here Anymore*, *Restoration*. Goodspeed: *Annie Get Your Gun*, *Carousel*. Paper Mill Playhouse: *On The Town*, *Damn Yankees*. Dallas Theater Center: FLY. National Tour: *West Side Story*. Education: MFA Stage Design, Southern Methodist University. Please visit www.tlegalley.com

JOHN LASITER (*Lighting Design*) Connecticut: Goodspeed (1776, *Big River*, *Camelot*, *Carnival!*, *Annie Get Your Gun*, *Show Boat*, *City of Angels*, *Hello! My Baby*, *Carousel*), Long Wharf, Hartford Stage, TheaterWorks. Broadway: *High*. Off-Broadway: *Make Me a Song: The Music of William Finn*, Alarm Dog Repertory Company, Blue Light Theater Company, Music Theatre Group. Regional: Actors Theatre of Louisville, Arena Stage, Arizona



WHO'S WHO

Repertory, Asolo Repertory, Centerstage Baltimore, Cincinnati Playhouse in the Park, Cleveland Play House, Dallas Theater Center, Florida Stage, George Street Playhouse, Geva, Milwaukee Repertory, New Mexico Repertory, Northlight, Pittsburgh Public, South Coast Repertory, Syracuse Stage, Virginia Stage. www.johnlasiter.com

JAY HILTON (*Sound Design*) is proud to continue his long association with Goodspeed and wishes to congratulate the entire organization on its 50th Anniversary season. Jay is pleased to be working with director Rob Ruggiero once again. Other Goodspeed collaborations with Mr. Ruggiero include *1776*, *Big River*, *Camelot*, *Show Boat*, and last season's *Carousel*. Jay has also designed countless other productions at both the Goodspeed Opera House and Goodspeed's Norma Terris Theatre in Chester. His work has also been heard on Broadway, National Tours, and at regional theatres from coast to coast. While being Goodspeed's Resident Sound Designer, Jay also serves as Goodspeed's Lighting & Sound Supervisor. He and his wife, Goodspeed Line Producer Donna Lynn Hilton, make their home (and garden) in Hadlyme.

MARK ADAM RAMPMEYER (*Hair & Wig Design*) is very happy to return to Goodspeed for this production. His work has been seen here in *Good News!*, *Something's Afoot*, *42nd Street*, *Big River*, and *Half a Sixpence*, to name a few. Broadway: *West Side Story*, *Lysistrata Jones*, *The Farnsworth Invention*. Off-Broadway: *The Toxic Avenger*, Horton Foote's *Orphans' Home Cycle*, *The Milk Train Doesn't Stop Here Anymore* with Olympia Dukakis, and, most recently, *Talley's Folly* at Roundabout Theatre Company. Mark is the Associate Artistic Director at the John W. Engeman Theater on Long Island. Thanks to all for their continued support on this journey. *peep*

DAN DeLANGE (*Orchestrator*) has scored music for Paul Williams, Julie Andrews, Rosie O'Donnell, Jerry Herman, Harvey Schmitt, Peter Link, and The Jim Henson Company. He orchestrated the premiere of Charles Strouse's *You Never Know*, conducted the Broadway National Tour of *Chicago*, and has orchestrated over 30 productions for Goodspeed. Graduate of Interlochen Arts

Academy and Oberlin Conservatory of Music. DanDeLangeOrchestrations.com

WILLIAM J. THOMAS (*Assistant Music Director*) has served as principal conductor for five mainstage productions (including *42nd Street* and *Brigadoon*) and associate conductor for 19 other productions (including *My One And Only*, *Annie Get Your Gun*, and *1776*). Bill, who also serves as Director of Music Ministries at Christ the King Church in Old Lyme, is grateful to be celebrating his 20th year of being part of the Goodspeed family—many thanks to MOF! Love to Lindsay Ryan and Collin Michael.

GILLIAN LANE-PLESCIA (*Dialect Coach*) is pleased return to Goodspeed, where she coached *The Fabulous Lipitones*, *Amazing Grace*, *My One And Only*, *Annie Get Your Gun*, *Camelot*, *Big River*, *Half a Sixpence*, and *1776*. She recently coached *War Horse* and *Priscilla Queen of the Desert* on Broadway, is currently coaching the *War Horse* tour, and will shortly start work on a new Broadway show. Recent Regional work includes *The Tempest* at McCarter; CenterStage Baltimore, Hartford Stage, McCarter, and The Guthrie. She was an English Diction coach at Chicago's Lyric Opera for five seasons. She teaches at Juilliard. Her dialect materials are used throughout the US and overseas.

STUART HOWARD & PAUL HARDT (*Casting*) have cast hundreds of shows over the past 25 years in the US, Canada, and Great Britain. Among their favorites: *West Side Story* and *Come Fly Away* on Broadway and on tour, *Gypsy* (Tyne Daly), *Chicago* (Bebe Neuwirth, Ann Reinking), the original *La Cage aux Folles*. Off-Broadway: *I Love You, You're Perfect, Now Change*; *The Normal Heart*. Coming up: *The Nutty Professor*, directed by Jerry Lewis. They are very pleased to be casting for Goodspeed again.

BRADLEY G. SPACHMAN* (*Production Stage Manager*) is proud to help Goodspeed celebrate its 50th Anniversary season, having been present for 19 of those years! Originally from Chicago, he has worked at the Goodman and Lookingglass theatres. He brought Goodspeed's productions of *Pippin* and *The Boy Friend* to audiences across North America. At The Norma Terris, he most



WHO'S WHO

recently stage managed *The Great American Mousical* for Julie Andrews and Christopher Gattelli. Some of his favorite Goodspeed productions include *City of Angels*, *King of Hearts*, and *Gentlemen Prefer Blondes*. He owes an enormous debt of gratitude to the entire Goodspeed family over our shared history, but most particularly MPP and DLCH. For Kim.

HEATHER KLEIN* (*Assistant Stage Manager*) is thrilled to be back for her second full season and to be celebrating Goodspeed's 50th year. Favorite productions include *Jim Henson's Emmet Otter* (2008 & 2009), *42nd Street* (2009), *Hello! My Baby* at The Norma Terris (2011), and *Carousel* (2012). New York: *The Mushroom Pickers*, US Premiere (alloy theater company); *Binding* (SolaNova Festival); *Enfrascada* (Clubbed Thumb Summerworks Festival). Regional: McCarter Theatre Center, Yale School of Drama, Berkshire Theatre Festival, North Shore Music Theatre, FUSION Theatre Company, ReVision Theatre, Vineyard Playhouse. BA from Brandeis University.

MICHAEL P. PRICE (*Executive Director*) Under the direction of Michael Price since 1968, Goodspeed Musicals is internationally recognized for its dedication to the advancement and preservation of the American musical. For Goodspeed, Mr. Price has produced over 250 classic and forgotten musicals, 100 new musicals, and transferred 19 shows to Broadway (including *Man of La Mancha*, *Annie*, and *Shenandoah*), earning 13 Tony Awards. Goodspeed itself was honored with 2 special Tony Awards. Mr. Price is the founder of the League of Historic American Theatres and the National Alliance for Musical Theatre and serves as Treasurer of the American Theatre Wing. He received his B.A. from Michigan State University, M.A. from Minnesota, and an M.F.A. from Yale. Married to Jo-Ann Nevas Price for 42 years, they are the proud grandparents of Ezra.

BOB ALWINE (*Associate Producer*) joined the Goodspeed producing team in 2002. He established the Goodspeed National Touring initiative featuring productions of *Pippin* and *The Boy Friend* directed

by Julie Andrews. Previously, he worked as the Associate Managing Director of The Old Globe in San Diego, CA, and the Director of Programming for The Ordway Center in St. Paul, MN. Bob holds an MFA in Theater Management and Producing from Columbia University and was a recipient of an NEA Award in musical theater producing.

DONNA LYNN COOPER HILTON (*Line Producer*) is in her 26th season with Goodspeed having worked on nearly 90 Goodspeed productions. Recent successes include the acclaimed productions of *Show Boat* and *Carousel* at the Opera House, *Amazing Grace* and *The Fabulous Lipitones* at The Norma Terris, and the creation of Goodspeed's Writers Colony. She supervises Goodspeed's education department, where she oversees the Festival of New Musicals, the annual NYU Musical Theatre Writing Program residency, and Goodspeed's Musical Theatre Institute. She is President-Elect of the board of the National Alliance for Musical Theatre. A native of North Carolina and a graduate of East Carolina University, Donna Lynn and her husband, Goodspeed Lighting and Sound Supervisor, Jay Hilton, make their home in Hadlyme.

R. GLEN GRUSMARK (*Production Manager*) is a graduate of North Carolina School of the Arts, where he earned a scholarship for artistic excellence and a BFA in technical production. In addition to Goodspeed's two stages, Glen has overseen technical management of two Goodspeed National Tours and Goodspeed's *By Jeeves!* on Broadway, as well as transfers, construction, and installation work on Goodspeed's behalf, including Brooklyn Academy of Music, Variety Arts Theatre (NYC), New World Stages (NYC) and The Ford's Theatre (DC).

ACTORS' EQUITY ASSOCIATION, founded in 1913, represents more than 49,000 actors and stage managers in the US. Equity negotiates wages and working conditions, providing a wide range of benefits, including health and pension plans. Equity seeks to foster the art of live theater as an essential component of our society.



PROGRAM NOTES

By Joshua S. Ritter, Education & Library Director

A personal artistic triumph and arguably the most ambitious project of his career, Frank Loesser's *The Most Happy Fella*, like Gershwin's *Porgy and Bess*, built bridges between the world of opera and musical comedy. Both shows, and a number of other productions in the musical theatre canon, employ techniques traditionally used in the world of opera. When asked to weigh in on how to categorize his piece, Loesser steadfastly described *The Most Happy Fella* as “a musical comedy—with a lot of music!” More importantly, *The Most Happy Fella*'s lavish score and moving love story continues to delight audiences regionally, at opera houses, and on Broadway.

Project Three, later entitled *The Most Happy Fella*, began as a concept soon after Loesser's monumental success with *Guys and Dolls*. Playwright Samuel Taylor suggested to Loesser that he musicalize Sidney Howard's Pulitzer Prize-winning play *They Knew What They Wanted*. Taylor intended to write the book, but later changed his mind and suggested that Loesser try to write the score, lyrics, and libretto. It would be Loesser's first time adapting a play, but after some friendly words of advice from Taylor—“Any time you have doubts about what you're doing, write a song”—Loesser began work on the project.

The musical was rather controversial when the Theatre Guild produced it in 1924. It reflected the changing mores of the decade, dealing with serious subjects such as infidelity, forgiveness, and compromise between male and female characters. Thirty years later, however, these subjects seemed tame, and the musical had fallen into disregard. But, to Loesser's credit, he re-imagined the story by toning down or removing tragic, political, and religious elements, leaving “a warm simple love story, happy ending and all, and dying to be sung and danced.” Loesser added new characters to shape the piece dramatically and to allow for more comedy. He included Cleo, Rosabella's coworker friend from Dallas; a foreman named Joe, also from “Big D;” Tony's sister, Marie; and three chefs named Pasquale, Giuseppe, and Ciccio.

Loesser spent five years adapting the piece and composing songs that ranged in style from traditional Broadway tunes to amorous duets, operatic arias, canons, trios, choral episodes, quartets, parodies, and orchestral interludes.

Opening in 1956, during the competitive Broadway season that gave us *My Fair Lady*, *Bells Are Ringing*, and *Candide*, *The Most Happy Fella* was lauded as an outstanding and unique musical drama. It not only differed from Loesser's previous shows and the other musicals that season, it was unlike most musical hits of the past twenty years.

Thirty five years after its first appearance on Broadway, the 1991 Goodspeed Musicals season began with Gerald Gutierrez's brilliant reinterpretation of *The Most Happy Fella*. The production realized Loesser's dream of using duo-pianos instead of a full orchestra. Not since *The Fantasticks* (in Goodspeed's premiere season) had so few instruments been employed in the Opera House pit for a fully staged musical. To offset the lack of musicians, 26 people were cast in the show, the largest cast that had ever been assembled on the Goodspeed stage.

After receiving unprecedented reviews by virtually every Connecticut newspaper, plus *The New York Times* and *Boston Globe*, the show was picked up by an amalgam of producers with the intention of ushering it to New York. The production would become Goodspeed's 13th Broadway transfer, opening at the Booth Theatre in 1992. It was later recorded on a single disc by RCA Victor with Spiro Malas as Tony, Sophie Hayden as Rosabella, Liz Larsen as Cleo, Charles Pistone as Joe, and Scott Waara as Herman.

Rob Ruggiero is at the helm of Goodspeed's current production of *The Most Happy Fella*. Ruggiero recently directed *Carousel* and *Show Boat* at the Goodspeed Opera House, and this will be his seventh time directing a Goodspeed production. After careful consideration, Ruggiero decided to set the piece in the 1950s and, with Goodspeed Musical Director Michael O'Flaherty, chose to offer a chamber ensemble approach to the orchestration, with a predominantly acoustic sound built off of the piano. Ruggiero focused his vision for the production on the timeless story of love and forgiveness. He believes that most of us can relate to these themes as we continue to strive to find our “somebody, somewhere.” *The Most Happy Fella* is a musical of enormous emotional intensity with soaring romantic melodies. We hope you enjoy this *abbondanza* for the senses!



Fires. Tornadoes. Two-year-olds.
Time to learn home safety.

WHEN YOU HELP THE AMERICAN RED CROSS, YOU HELP AMERICA.

WE ALL HAVE TO LOOK OUT FOR EACH OTHER. AND WHEN YOU AND YOUR FAMILY
HAVE AN EMERGENCY PLAN AND A DISASTER SUPPLIES KIT, EVERYONE FEELS SAFER.

[CONTACT YOUR LOCAL CHAPTER OR VISIT REDCROSS.ORG](http://REDCROSS.ORG)





ABOUT GOODSPEED MUSICALS

WHERE WE'VE BEEN

Goodspeed's beginnings date back to 1963 when it opened its doors as a professional musical theatre in an historic building on the banks of the Connecticut River in East Haddam. Under the direction of Michael Price since 1968, Goodspeed transformed from a struggling entity into a musical theatre with a mission. At first Goodspeed's commitment was to discover rarely produced musicals from the repertoire, reworking them and bringing them to life. It was also intent on adding to the repertoire by discovering and nurturing promising new musicals presented at its Norma Terris Theatre in neighboring Chester. While these commitments remain in place today, Goodspeed's main stage productions are more often contemporary works created during the lifetime of its audience.

To date, Goodspeed has exported 19 productions to Broadway – most famously *Annie*, *Man of La Mancha*, and *Shenandoah* – and produced 71 world premieres. Goodspeed stands as the first regional theatre in America to earn two special Tony Awards, one in 1980 for outstanding contributions to the American musical and a second in 1995 for distinguished achievement for a regional theatre.

WHO WE ARE TODAY

Goodspeed mounts six new and newly-worked musicals a year – three on its second stage and three on its main stage – a total of more than 400 performances during the April to December season. It stands at the forefront of producing and preserving the American musical, simultaneously reinventing the classics and inventing new ones. It attracts well-known icons of the theatre world and fosters emerging talent among composers, lyricists, and librettists. Each year, thousands of actors, directors, choreographers, and technicians aspire to come to Goodspeed to practice their craft. Among millions who know and love this art form – and those who appreciate its history and enduring appeal – Goodspeed is widely recognized as the “home of the American musical.”

In addition, Goodspeed contributes to the preservation of the art form through its Scherer Library of Musical Theatre, the second most extensive musical theatre research library in the United States. Throughout the year, and intensively during the months of winter, Goodspeed addresses issues unique to the field by offering innovative and highly sought-after programs through its Max Showalter Center for Education in Musical Theatre. The Festival of New Musicals features students from The Hart School and The Boston Conservatory performing staged readings of three brand new musicals, several industry-related seminars, a symposium, and two cabarets. The Showalter Center also encompasses Goodspeed's growing Musical Theatre Institute and programs for underserved children and teens. Goodspeed's newest program, the Goodspeed Writers Colony at Goodspeed Musicals, is a four week residency for musical theatre writers and is the only program in the country dedicated solely to the creation of new musicals.

THE FUTURE WE ENVISION

On the occasion of our 50th Anniversary, we have taken a moment to dream about the future. For the next fifty years, we see Goodspeed as a thriving artist colony where the creative process continues to rule and commitment to discovery shows up in new approaches to classic works; new ways to share Goodspeed's knowledge with the industry; new methods to mine genius and enrich the field with the next generation of musical theatre artists.

A complete listing of past Goodspeed Musical productions can be found at www.goodspeed.org



HISTORY OF GOODSPEED OPERA HOUSE

The Goodspeed Opera House has endured as a majestic presence on the Connecticut River since it was built in 1876 by William H. Goodspeed, a shipping and banking magnate and avid theatre lover. Since that time the Opera House has lived two lives: the first as a bustling center of commerce, housing a theatre, professional offices, steamboat passenger terminal, and a general store; and the second, after a period of neglect and deterioration, as a magnificent professional musical theatre fully restored in 1963 to its original splendor.

Goodspeed's history goes back to its opening night on October 24, 1877, when a repertory group presented the comedy *Charles II* and the farces *Box and Cox* and *Turn Him Out*. Featured performers of the day were brought to East Haddam by steamboat, many directly from theatre in New York.

After William Goodspeed's death, the theatre was eventually sold and used as a storage depot for the State Highway Department. The building was marked for demolition in 1958, but local preservationists became interested and in 1959 The Goodspeed Opera House Foundation was organized to restore and reactivate the theatre. With the cooperation of the State of Connecticut and the support of donor-members, the Goodspeed Opera House was restored and rededicated on June 18, 1963, with the opening of the musical *Oh Lady! Lady!!*.



The Goodspeed Opera House in the 1880s.



 **LIBERTY**
BANK

1-888-570-0773
liberty-bank.com

**SUPPORTING THE ARTS IS
OUR WAY OF PERFORMING.**

Make a Statement.SM

MEMBER FDIC

 EQUAL HOUSING LENDER



THE GOODSPEED OPERA HOUSE FOUNDATION

The mission of Goodspeed Musicals is to be the leader in preserving and producing musical theatre of the highest quality by:

- Rethinking, restoring and producing works that are valued and significant in the history of musical theatre;
- Developing new musical theatre works;
- Nurturing the talents of new composers, lyricists and librettists;
- Encouraging and developing the talents of artists, technicians, and administrators;
- Inspiring future audiences through education programs and outreach efforts;
- Preserving and expanding the archival collections of its Scherer Library of Musical Theatre and making them available for professional use;
- Maintaining the Goodspeed Opera House, a national historic landmark.

2013 BOARD OF TRUSTEES

Francis G. Adams, Jr.
President
John Barlow
Myron R. Bernstein*
David W. Bogan
J. Robert Buchanan*
Gregory Butler
Anthony Cacace
Russell Carter
Theodore S. Chapin
Kay Knight Clarke
Alvin Deutsch
General Counsel
Christopher Dodd
John Falcone
Muriel Fleischmann
David F. Frankel
Robert B. Friedman
John H. Hamby

Jeffrey S. Hoffman
Vice-President
Chandler Howard
Marcia Kalayjian
Lynde Selden Karin
Mary Ellen Klinck
Robert A. Landino
Vice President
Julie Godbout LeBlanc
Dannel P. Malloy
Ex Officio
Honorary Chairman
Mark Masselli
Treasurer
F. Patrick McFadden, Jr.
Lawrence McHugh
Robert Roy Metz*
Robert F. Neal*

Eric D. Ort
Secretary
Muriel Selden Paris
Michael P. Price
Executive Director
Donald G. Reed
Jefferson B. Riley
Hila Rosen
Susan Scherer
H. William Shure*
Joseph Smith
Cameron Staples
DeRoy C. Thomas*
John F. Wolter
First Vice-President
Dona D. Young*

**Emeritus Trustee*
***Honorary Trustee*

GOODSPEED COUNSELORS

Carol Adams Dahlke
Sandra Anagnostakis
Richard T. Cersosimo and
Valerie J. Koif
Catherine Ladnier and
J.M. Robinson

Mrs. Charles R. Lindberg
Andrew and Bonnie Lee
McKirby
Anthony and Chelsea Michaud
Chuck and Dianne Ramsey
Saul Rosen

Dr. Anne L. Rothstein and
Ms. Jane Hellman
Edgar E. Shirley
Leonardo H. Suzio
Carl and Jessica Thompson

THE SCHERER LIBRARY OF MUSICAL THEATRE ADVISORY BOARD

Ken Bloom
Theodore S. Chapin
Alvin Deutsch
Christine Donohue

Brian Drutman
Michael A. Kerker
Robert Kimball
Bruce Pomahac

Bill Rosenfield
Henry S. Scherer, Jr.
Steven Suskin

THE MAX SHOWALTER CENTER FOR EDUCATION IN MUSICAL THEATRE ADVISORY BOARD

Gordon Greenberg
Robert R. Metz

Jane Percy
Peter Walker

Nancy Wolf



CORPORATE SUPPORT

GOODSPEED GUILD BOARD OF DIRECTORS

Amy Campbell
President

Diane Rottmann
Vice President

Lorraine Lieberman
Recording Secretary

Joe Breindel
Corresponding Secretary

William Stamm
Treasurer

GOODSPEED MUSICALS BUSINESS COUNCIL

David W. Bogan,
Chair, Edwards Wildman

Gregory B. Butler
Northeast Utilities

Anthony Cacace
*GKN Aerospace Services
Structures Corporation*

Russell Carter
Comcast

John C. Falcone
Sennheiser Electronic Corporation

John H. Hamby
Advanced Business Banking Solutions LLC

Jeffrey S. Hoffman
Hoffman Enterprises

Chandler Howard
Liberty Bank

Robert A. Landino
Centerplan Companies

F. Patrick McFadden, Jr.

Lawrence McHugh
Middlesex County Chamber of Commerce

Joseph Smith
The Mohegan Tribe

John F. Wolter
Updike, Kelly & Spellacy, P.C.

CORPORATE SUPPORT

Goodspeed Musicals thanks these corporations and businesses for their generous and sustaining support.

Advanced Business Banking Solutions LLC
Bank of America
BL Companies
Centerbrook Architects & Planners, LLP
Centerplan Companies
Coca Cola Bottling Company of Southeastern
New England, Inc.

Comcast
Connecticut Light & Power Company
Creative Transportation and Tours
DeWitt Stern Group, Inc.
Dominion

Donofrio Financial MGMT, LLC
Edwards Wildman Palmer LLP

Essex Meadows
Essex Savings Bank
Hartford Business Journal

Hoffman Audi
The Inn at Middletown
Ironwood Capital
Kendall Jackson
KPMG
Liberty Bank

Nathan L. Jacobson & Associates, Inc.
Nederlander Producing Company of America
R&R Corrugated Container
Readco Management, LLC
Reynolds Garage & Marine
RisCassi & Davis, P.C.

The Riverhouse at Goodspeed Station
Robinson & Cole
The Safety Zone

Sennheiser Electronic Corporation
Shipman & Goodwin
The Shops at Mohegan Sun

The Shubert Organization, Inc.
Suburban Stationers

Tower Laboratories LTD
Town and County Club
Travelers

UIL Holdings Corporation
United Airlines
Updike, Kelly & Spellacy, P.C.

Webster Bank
Young's Printing



FOUNDATION & GOVERNMENT SUPPORT

FOUNDATION SUPPORT

Acorn Alcinda Foundation, Inc.
 The Adolph and Ruth
 Schnurmacher Foundation, Inc.
 The Aeroflex Foundation
 Aldo DeDominicis Foundation
 The ASCAP Foundation - Irving
 Caesar Trust
 The Christine E. Moser
 Foundation

Community Foundation of
 Middlesex County/Shamrock
 Fund
 The Daphne Seybolt Culpeper
 Memorial Foundation, Inc.
 The Harold and Mimi Steinberg
 Charitable Trust
 The Johnny Mercer Foundation
 Mabel F. Hoffman Charitable
 Trust

The Max Showalter Foundation
 Newman's Own Foundation
 The Noël Coward Foundation
 Public Welfare Foundation
 The Rodgers and Hammerstein
 Foundation
 The Samuel and Rebecca
 Kardon Foundation
 SBM Charitable Foundation, Inc.
 The Shubert Foundation, Inc.

GOVERNMENT SUPPORT

Department of Economic and
 Community Development
 Office of the Arts



LOOKING TO THE FUTURE—LEAVING A LEGACY

Since its inception, Goodspeed Musicals has particularly benefited from the unique advantages of planned gifts and bequests. Because such gifts provide financial support over time, they have been essential to Goodspeed Musicals' ability to consistently move from strength to strength, plan for the future with confidence, and ensure millions more will enjoy award-winning productions for generations to come.

WILLIAM H. GOODSPEED LEGACY SOCIETY

Goodspeed Musicals thanks the members of the William H. Goodspeed Society who have included a future bequest to Goodspeed Musicals in their wills or estate plans.

Anonymous (6)
 Edward Cape
 Michael Chaiklin
 Amy Lee Crockett, DVM
 Stephen B. Crowley, III
 Richard Goodman
 Elizabeth Jane Goodspeed
 Mrs. Harry J. Gray

Ruth Katz
 Dorothy Liepertz
 Andrew C. McKirdy
 Leslie and Lynne Nathan
 Jane E. Ondovcsik
 Janet and Peter Otto
 Michael and Jo-Ann Price
 Mary Jane Richilson

Dr. Anne L. Rothstein and
 Ms. Jane Hellman
 Mary Schneller
 Dr. Benjamin Sevitch
 Carol L. Sirot
 Dr. and Mrs. David Snyderman
 Sheila L. Tomlinson
 Mark and Roberta Velez

BEQUESTS

Goodspeed Musicals fondly remembers those who left a bequest or in whose honor a memorial fund was established. Their love of musical theatre and our institution is an example to us all.

The Milon Barnes Memorial Fund
 Cynthia Kellogg Barrington
 Leonard N. Blake
 Fellner Family Foundation
 Albert D. Firestone
 Henry Sage Goodwin
 Memorial Fund
 The Edith O. Haynes Trust
 Martha C. Hinkel

Thomas W. Holton Memorial Fund
 Marjorie W. Jolidon
 John S. Kartovsky
 The Adrienne I. Koch Revocable
 Trust
 William J. Kotchen Memorial
 Fund
 Evan S. McCord
 Edith L. Nyman

Muriel Selden Paris
 Rochelle Richilson
 Barbara V. Ross
 Bertha L. Rottmann
 Marco S. Savona
 Richard Schneller
 Martha Shattuck
 John F. Single, III
 Mary Sargent Swift
 Mark A. Wainger



LOOKING TO THE FUTURE—LEAVING A LEGACY

NAMED FUNDS AND ENDOWMENTS

*These funds and endowments listed below were established during lifetime, by bequest, or in memoriam with an outright gift to Goodspeed Musicals.**

The Dr. and Mrs. Harold D. Bornstein, Jr.
Charitable Gift Annuity*
The Frederick A. and Justine Millspaugh Cattin Family Fund
The Arthur and Elizabeth Godbout Fund for the
Support of the Music Department
The George S. and Charmian A. Goodspeed Memorial Fund
The A. Nicholas Groth, Ph.D. Charitable Gift Annuity*
The Richard G. and Elizabeth F. Kehoe Charitable
Gift Annuity*
The Charles R. Lindberg Family Fund

The Maryann and Jane E. Ondovcsik Fund for the
Preservation of the Victorian Goodspeed Opera House
The Salvatore Marzano, Jr. Memorial Student
Scholarship Fund
The Elaine McKirdy Intern/Apprentice Endowment
The Charlotte and Gerald Sandler Educational Endowment
The Scherer Library of Musical Theatre Fund
The Max Showalter Center for Education in
Musical Theatre
The Ashton M. Tenny, Jr. Memorial Annuity Fund*

**The donors receive a tax advantaged income stream during their lives and a named fund or endowment will be created when the annuity reverts to Goodspeed Musicals.*

MEMORIAL AND HONOR GIFTS

*Goodspeed Musicals gratefully acknowledges the following gifts made to honor a special occasion or in memory of a loved one**

In memory of Robert B. Friedman: Willow Springs Investors, LLC

In memory of Steve Barton: Maria Candil

In honor of Karen Donn: Elliott and Elisa Donn

In honor of Cy Seymour: Mr. and Mrs. DeRoy C. Thomas

In honor of Hila and Saul Rosen: Nancy and David Gluck

In memory of Dr. Harold Safalow: Mr. and Mrs. Richard Madrak

In memory of Evan McCord: William and Arline Morrissey

In memory of Norman R. Benjamin, Sr.: Mr. and Mrs. Robert J. Demaria

In memory of Richard Schneller: Mr. and Mrs. David Parmelee, Mr. and Mrs. James J. Murphy, Jr., Geraldine Foster, Mr. and Mrs. Samuel Golding, Mr. and Mrs. William H. Grover, Veronica K. Brocklebank, Janet Miller, Florence D. Boggio, Suzanne R. Levy, Elaine T. Lowengard, Leta Marks, Mr. and Mrs. A. Richard Harris, Mr. and Mrs. Gardner Wright, Jr., Mr. and Mrs. Robert F. Coviello

In memory of Mary Swift: Mr. and Mrs. Edwin Mulford, Richard Verrengia, Mr. and Mrs. Henry VonWodtke, James J. Mahoney, John L. Christie, Mr. and Mrs. Richard Walsh, S. Meyers, Carleton D. Briggs, Mr. Robert M. Lynch, Mr. and Mrs. William W. Bernhart, Mr. and Mrs. Charles Steffens, Jr., Mr. Arthur Wasserman, Mr. and Mrs. James Babcock, Mr. and Mrs. Richard Palatine, Mrs. Carolyn Shelton, David and Susan Motycka, Ward C. Swift, Trudy M. Daly, George W. Cole

In memory of Muriel Selden Paris: Mrs. Robert R. Mathews, Mr. and Mrs. Nathaniel S. Howe Jr., Oivind Lorentzen, Jr., Dorothy E. Doran, Mrs. Joan Perera, Mrs. Lyn Mathews Perrin

**for period January 1 to August 28, 2013*

SPECIAL GIFTS

Goodspeed Musicals is grateful to those who have made a special gift during the 2013 season. They include:

Sandra Anagnostakis
Mr. and Mrs. James Beloff
Bob Boyett Theatricals
Maria Candil
Michael Chaiklin
Mr. Gordon Cobleigh
Mr. William Curran
Alice Dadourion

Frank DeMonaco
Mr. and Mrs. Raymond J. Fontana
Sunny Harris
Michael Isaacson
The Hoffman Family
Suzanne and Donald Joffray
The Doris & Simon Konover
Family Foundation

Benjamin B. Liveten Charitable
Grand Nephew Trust
Alice Hammerstein Mathias
Dr. and Mrs. Gerald Sandler
Mr. and Mrs. Richard Siderowf
Carol L. Sirot
Peter Teichmann
Sonny Whelen

Won't you support the future of the finest musical theatre by making a planned gift to Goodspeed Musicals today?

*For more information, please contact: Gloria Gorton, Goodspeed Musicals, PO Box A,
East Haddam, CT 06423, 860-873-8664 x366, ggorton@goodspeed.org*



GOODSPEED MEMBERSHIP

THANK YOU, Goodspeed Members! Goodspeed is over 7,000 members strong – for a complete listing, including Supporting (\$150+), Family (\$100+) and Associate (\$50+) members, please visit our website at www.goodspeed.org.

+ *With special thanks to our members who have been with us 40+ years*

As of August 28, 2013

MARQUEE PARTNERS

FOUNDING PARTNER (\$25,000+)

Hermine Aborn +

Dr. Anne L. Rothstein and Ms. Jane Hellman

Lucille and Dave Viola, Sr.

INVESTING PARTNERS (\$10,000+)

Mr. and Mrs. Francis G. Adams, Jr.

Richard T. Cersosimo and Valerie J. Koif*

Alice Dadourian

Mr. and Mrs. Jerry K. Day

Dr. and Mrs. David F. Frankel

Suzanne and Donald Joffray

Mr. and Mrs. Gerald Lazar

Michael and Jo-Ann Price

Mable and Richard Seymour*

Joy and Angelo Tomasso, Jr.

Meghan Young

EXECUTIVE PRODUCING PARTNERS (\$7,500+)

Sandra Anagnostakis

Dr. Michael W. Bragulla

Frank and Amy Campbell

Hila and Saul Rosen

PRODUCING PARTNERS (\$5,000+)

John Barlow and Scott Rudin

Mr. and Mrs. Anthony Cacace

Herb Chambers

Mr. and Mrs. Walter W. Congdon

Alvin Deutsch

David and Judy Fleischer

Mr. and Mrs. Charles M. Foster

Sandy and Bob Friedman

Ron and Karen Goodspeed

Mrs. Norwick Goodspeed

Gordon D. Gross

Julie and Peter LeBlanc

Dr. Thomas M. Fynan and William Loutrel

Anthony and Chelsea Michaud

Donald G. Reed

Ted and Vada Stanley

Mr. and Mrs. DeRoy C. Thomas

Bill and Sue Webster

THE PRODUCER'S CIRCLE

ASSOCIATE PRODUCING PARTNERS (\$2,500+)

Mr. Dave Adams

Mr. and Mrs. Charles

Beach Barlow

Maxwell and Sally Belding

David W. Bogan and

Heather Hunt

Kathy and Bruce Briggs

Sally and Ted Carrier

Christine E. Moser Foundation

Kay Knight Clarke

Mr. and Mrs. Robert F. Coviello

Mrs. J. Noyes Crary

Mr. and Mrs. William R. Davis

Senator Chris Dodd and

Jackie Clegg Dodd

Mr. and Mrs. Robert K. Erf +

Mr. John C. Falcone

Bill and Denise Feeley

Muriel and Karl Fleischmann

Chad and Brenda Floyd

Robert A. and Nancy J. Franco

Betty Gilman

William J. Ginnetti, Sr.

The Harry E. Goldfarb

Family Foundation

Mrs. Helen Gray

John and Joanna Hamby

Nancy and Jeffrey Hoffman

Mr. Christopher Joy and

Ms. Cathy Velenchik

Dr. and Mrs. David B. Kalayjian

Lynde and Michael Karin

Ted and Kiki Kennedy

Robbie and Al Kestnbaum

Ms. Catherine Ladnier and

Mr. J.M. Robinson

Mr. Robert A. Landino

Christine LaSala and

Ellen J. Lipschitz

Mr. and Mrs. Robert H. Lewis

Jack Light +

Frank Loesser Enterprises

Ruth Lord

Mark Masselli and

Jennifer Alexander



GOODSPEED MEMBERSHIP

ASSOCIATE PRODUCING PARTNERS (\$2,500+) (cont)

Arlene Tunney and
Ken Maxwell
Mr. and Mrs. F. P. McFadden, Jr.
Larry and Patty McHugh
Service Station Equipment Inc.
Regina and Robert F. Neal
John and Pat Nyikos
Eric Ort and Duff Ashmead

Muriel Selden Paris
Chuck and Dianne Ramsey
Diane M. Rottmann*
Peter and Betsy Russell
Dr. and Mrs. Gerald Sandler +
Dr. and Mrs. Jaime Santamaria
Mr. and Mrs. Henry S. Scherer, Jr.
Donna and Bill Stamm

Melinda and Paul Sullivan
Mrs. Ashton M. Tenney, Jr.
Carl and Jessica Thompson
Thomas F. Tyrseck and
Marie V. Morosky
Dorinda and Mark Winkelman
Jef and Kate Wolter
The Zachs Family

PRODUCERS (\$1,500+)

Dolores L. Andrew
Greg and Joyce Barabas*
Mr. and Mrs. Barton M.
Bauers, Jr.
Mr. and Mrs. Terry W. Chabot*
Mary and Gordon Cobleigh
Maury and Sonia Cohen
Foundation
Marilyn and Ted Colvin
Terri and Don Coustan
Jane and Newell Curtis
Fran and Phil Feltman +
Mr. and Mrs. Raymond J.
Fontana
**Mr. and Mrs. Albert B.
Glassenberg +**
Lea and Dick Goodman
Roger C. Goodspeed

David and Patricia Hadlow*
The Hermann Family
Charitable Foundation
Chandler and Miriam Howard
Mr. and Mrs. Alfred Arthur Hulse
Sallie L. Kemp
Sharon and Timothy Lynch
Mrs. Robert R. Mathews
Mrs. Bernice Montgomery
Peter Johnson Musto
Naomi and Jerry Neuwirth, M.D.
Mr. and Mrs. James Olson
and Family
William Orsini and Walter Smith
Sam and Phyllis Pierson
Mr. and Mrs. Willard F. Pinney, Jr.
Mr. Michael G. Polo
Daniel and Lisa Price

Lt. Col. Robert A. Riddlehoover
Mary M. Wilson and Jeff Riley
Mrs. Elaine Sayadoff
Ms. Joyce Schilberg
Richard and Mary Schneller
Jerome and Marian Silverstein
Richard D. Stapleton
Sorenson-Pearson
Family Foundation
Beatrice Stokes
Mr. and Mrs. William J. Stolba, II
Mr. Milton Stretton
Brenda J. Sullivan, CPA
Mr. and Mrs. Edward C. Swift +
Judy B. Taylor
Donald and Sharyn Timmerman
Michael and Florence Timura
Arthur E. Webster, Esq.

THE PRODUCER'S CIRCLE (\$1,000+)

Mr. Daniel Adams
Billie and Peter Anker
The Arborio Family
Mr. and Mrs. John C. Arena
John and Caron Avery
Sherri and Scott Baggett
Denise Bernardo and
Edwin Muentes
Mr. and Mrs. Curtis L. Blake
Mr. and Mrs. Bruce L. Blakeslee
Ann and Alan Blanchard
Mr. and Mrs. Gustaf R. Bodin
Kenneth and Judith Boudreau
Nadine and Robert Britton, III
Dr. J. R. Buchanan
Mr. and Mrs. Russell Carter
Theodore S. Chapin
Kay and Maia Chiat
Mark Ciliano & Kathleen Christy
Scott and Jo Cleary

Colchester Mill Fabric and
American Alarm Co.
Mr. and Mrs. Thomas R. Cox, III
Jim Cronin and
Justine Moriarty
Chip and Carol Dahlke
Mr. and Mrs. David W.
Dangremond
Mr. and Mrs. Donald Daren
Mr. and Mrs. Steven Daren
Emme and Jonathan Deland
William and Christine Donohue
Mrs. Nathan L. Dubin
Frederick Elia*
Mr. and Mrs. J. Richard Farley
Dr. and Mrs. Brendan M. Fox
Samuel S. Fuller
Avery and John Funkhouser
Rick Gibbons
Mr. and Mrs. Burt Hallisey

Ron and Nina Harris
James and Heather Higgins
Attorney Harvey Hoberman and
Penny Parker
Prudence Hoffman
Betty Ruth and Milton Hollander
Diana and Paul Hughes
Mr. and Mrs. Leslie A. Hyatt
Mr. and Mrs. Michael C. Jainchill
Mr. & Mrs. Penfield Jarvis
Attorney and Mrs. Scott Jezek
John and Monique Kananowicz
Robert Kaufman and
Joan Chapel
Harriett Kittner
Mr. and Mrs. Simon Konover
Barbara and Ira A. Levin
James and Linda Lianos
Mrs. Margaret Lindberg
Peter and Rosemary Lombardo



GOODSPEED MEMBERSHIP

THE PRODUCER'S CIRCLE (\$1,000+) (*cont*)

Mr. and Mrs. Robert J. Lyons
 Alice Mathias
 Joseph and Nancy Mazza*
Mr. and Mrs. George J. Michel, Jr. +
 Joe and Beth Molder
 Ken and Paula Munson
 Tom and Karen Murphy
 Mr. Justin D. Nelson
 Robert and Carolyn Nelson
 Captain & Mrs. Stuart R. Nestampower
 Mr. and Mrs. David Ogden
 Jane E. Ondovcsik
 Mr. Rolf C. Peterson*
 Raymond and Marlene Piche

Rev. and Mrs. Marston Price
 John and Fran Sadek
 Jane and Morley Safer
 Daniel W. and Sandra B. Schneider
Dr. and Mrs. John Schowalter +
 Fred and Carol Seeman
 Fred and Barbara Sette
 Karen and Allyn Seymour
 Mr. and Mrs. Allyn Seymour, Sr.
 Mr. and Mrs. Martin C. Shapiro
 James and Penelope Sherrard
 Louis and Tracy Shoor
 Mr. Joseph Smith
 Dr. and Mrs. Joseph L. Staneck
 Henry "Skip" Steiner

Dr. and Mrs. Russell Sylvester
 Kathleen Thompson*
 Sheila L. Tomlinson*
 Mr. and Mrs. Paul Tracey
 Robert and Nancy Treuhold
Gertrude Tyrol +
 Mrs. Arthur D. Van Winkle
 Julia Ann & Bill Walton
 Judith and Steven Warner*
 Leslie and Richard Weinstein
 RADM. Louise C. Wilmot USN (Ret.) and James E. Wilmot
 Symond and Martha Yavener
 Ferne and Peter Youmans
 Eleanor E. Zajac*
 Arthur Zieky and Bill Witkowsky
 Mr. and Mrs. Peter R. Zucco

ASSOCIATE PRODUCERS (\$500+)

Inta and Taggart Adams +
 Howard J. Aibel
 Fred and Roberta Allardyce
 Rose M. Allen
 Robert C. Alwine
 Archambault Insurance, Inc.
 Mr. and Mrs. Drew Ashley
 Bette and Bruce Avery
 Mrs. Jack Axelrod
 Mr. and Mrs. Robert Babcock
 Dr. and Mrs. John V. Banta
 Mr. and Mrs. Ray Barker*
 Mr. and Mrs. David N. Barry*
Dee & Ed Baum +
 Michele R. Baumann
 Chris and Abby Beale
 David A. and Alice C. Belden
 Mrs. Robert Bell
 Caryl and Edward Bengelsdorf
 Anonymous
 Merle and Ron Bernstein
 Alis and Bob Bires*
 Mr. and Mrs. J. P. Bischoff
 James Blackburn*
 Jan and Ron Bogdan
 Wallis and Laurie Boyd
 Don and Susan Boyle
 Desolie and John Boys
 David Bradley and
 Kathleen Schiano
 Stephanie M. Branta

Michael Brown
 Mr. and Mrs. James V. Bruni*
 Peter S. and Sally R. Burgess
 Robert and Susan Burress
 Helen Babcock and
 Tom Buttacavoli
 Mr. and Mrs. S. E. Canaday, Jr.
 Paul C. and Patricia B. Carlson
 Vonice and Russell Car
 Centerbrook Architects
 and Planners
 Richard Chiaramonte and
 Sally Eberhardt
 Jack and Bertie Chuong
 Barbara L. Clark
 Mr. and Mrs. Charles A. Clinton
 Marshall Cohn
 Kay and Ted Colangelo
 Philip and Clio Coles
 Dr. and Mrs. Michael M. Conroy
 Karen and Michael Cormier
 Linc and Lynette Cornell
 Omar Coffee Company
 Joel N. and Ruth Ann C. Davis
 Dr. and Mrs. Arthur C. DeGraff, Jr.
 Brian and Linda Dewhirst
 Roy and Betsy Dickinson
 Mr. and Mrs. Jonathan Dodd
 Carol and Jack Donaghue
 Mr. and Mrs. John F. Donahue
 John and Pat Doolittle

Laura and James Duncan
 John and Donna Dunn
 Mary Jane Dunn*
 Colin Eastland and Joe Landry
 Carol and John Eddy
 Mr. and Mrs. David R. Edwards
 Gene and Vera Ehnen
 Dasha Epstein
 Mrs. Florence R. Ergin
 Sheldon Erwine
 Anonymous
 Gloria L. Fisher
 Lynne and Richard Fletcher*
 Janet M. Forgey
 William and Caryn Freilich
 Dr. James Frost
 Barbara A. Gabianelli
 Dr. and Mrs. Gregory J. Gallivan
 The Venerable and Mrs. Ronald
 S. Gauss
 Rona Gelber
 Mario S. Gioco, C.P.A.
 Wil and Mary Ellen Gladue
 Dr. and Mrs. Donald Gonci*
 Dr. and Mrs. Lawrence
 Goodman
 Gloria J. Gorton
 Mr. and Mrs. Mark B. Gossner*
 Ray and Judy Grasso
 Walter and Kathryn Gregory
 Anonymous



GOODSPEED MEMBERSHIP

ASSOCIATE PRODUCERS (\$500+) (*cont*)

Mr. and Mrs. Robert P. Haff*
Newell and Betty Hale Fund of
Greater Worcester

Prof. Bill Harrelson
Susan Hays

Sue Hessel and Karen Dahle
William Hewitson

Jay and Donna Lynn Hiltton
Claudette, Ned, Maeve
and Ciara*

T. Donald and Helene
Hirschfeld

James and Isabel Jackson
Barbara & Ray Jacobsen

Ted and Rosemary Jadick
John and Emily Johl

Elizabeth Giancesello Judd
Dr. and Mrs. Andrew Keene

Mr. and Mrs. Douglas E. Kehl
The Kitchings Family +

Steve and Debbie Kleinman
Ronald Klimas

Mary Ellen Klinck
Nancy Kline and James Trail

Deborah Kotchen and
Michael Leahy

Abbey and Stephen Kreinik
Frank and Elisabet Landrey

Roger and Carla Levien
Lorraine Lincoln Lieberman

Bonnie and Brian Liistro
Mr. and Mrs. Harry Link

Dr. and Mrs. Koen Loeven
Roberta and Joseph

Lombardino*
Phyllis and Ray Losnes

Douglas R. Magee, Jr.
Stephen Mathews

Mr. and Mrs. Frederick
Maynard, Jr.

Jay McAnally
McCarty & Sons

John and Amy McCauley
Mr. and Mrs. Gordon McGovern

Andrew and Bonnie Lee
McKirby

Anonymous
Kerry and Donna Meehan

Anonymous
Mary Miko and Joseph Migliaro

Sandra Milles*
Margie and Lance Minor

Thomas and Pamela Moriarty
Jan and Harold Moskowitz

Michelle Mostello
Kevin Murphy and Laura

Galgowski
Dr. and Mrs. Thomas J. Murphy

David I. Newton
Ms. Sarmite Nielsen

William and Melanie Nivison
Philip and Linda Nuzzo

Mr. and Mrs. G. Robert O'Brien
Ms. Gina O'Connell

Loren and Elaine Otter
Mr. and Mrs. Peter J. Otto

**Dr. and Mrs. John
Paardenkooper +**

Peter and Candace Pappas
Ron and Carla Pariser*

The Michael Stewart
Foundation

Edwin and Claire Payne
Dag and Nancy Pfeiffer +

Beverly and Brian Platner
John and Georgette Quilter

Miriam W. Ragsdale
C. L. and Rosina Raiteri

Kate and Steven Rakowski, CFA*
Ober-Read and Associates, Inc.

Mitchell and Lorraine Rochefort
Gary R. Rounseville

Eric and Sandra Rustici
Patricia and Andrew Salner

Rita Salzman
Russell Santora

Mary and Joe Sargent
Ron and Cleora Savitski

Linda R. Savitsky and
Alvin G. Wolfgram

Linda and Philip Scheffler
Jack and Bonnie Scott

August and Nancy Serra*
Thomas and Pamela Shakun*

Mr. and Mrs. Edward J. Sharr, Sr.
Mr. and Mrs. Anthony P.

Shetensky, Jr.
John and Millie Simonzi

Stuart and Arline Small
Mr. and Mrs. Lawrence A.

Smedberg
Sally and Mark Snyder

Mr. and Mrs. Chris M. Steele
Josephine Merck and

James Stevenson
Bonnie and Thomas Stone

Ms. Sheila M. Stone
Suzio/York Hill

Fred Szufnarowski
Russell Tait

Bob and Debbi Thomas
John and Judy Turpin

Edwin B. Tuthill, Jr.
Mr. and Mrs. James Viola

Jean B. Vogel
Mr. and Mrs. Russell Waldo

Judith and Steven Warner
Michael and Ellen Wasyl

Patti and Howard Weiner
Suzanne Weinstein

Dr. John and Mrs. June Wilson*
Victoria and William

Winterer +
Ted and Jennifer Wislocki*

CohnReznick LLP
Mr. and Mrs. Clifford Wood

Peter and Joyce Wortman
Mr. and Mrs. Richard I.

Wrubel +
Mr. and Mrs. Robert Yudkin*

Dr. and Mrs. Robert Zavod +
Mr. and Mrs. Fred Zeytoonjian

Rick and Jane Ziilinskas



GOODSPEED MEMBERSHIP

DIRECTOR'S SOCIETY (\$250+)

- Mrs. Paul D. Abercrombie
 Barbara Agar
 Dr. and Mrs. Sultan Ahamed
 Dr. and Mrs. C. Wallace Andrias
 Paul and Christine Antaya
 Charles J. Anthony
 Martha Atkinson and
 Deborah Lyon
 Mr. and Mrs. Hillel J. Auerbach
 Louis Auletta
 John, Nancy and Nikki Baccaro
 Ms. Lauren Bagdasarian
 Kevin and Terry Baldwin
 Ms. Christine Baledes
 Norman and Jean Bartlett
 Myrna Baskin
 Cheryl and Rudy Basztura
 Cynthia Bates and
 Jonathan Russell
 Mr. and Mrs. John Bekish
 Dr. and Mrs. William R. Belury
 Gary and Ruth Benanav
 Mr. and Mrs. Jonathan Bennett
 Jan Coxé Berlage
 Randeé and Martin Berliner
 Dorothy, Bill and Jenna Berloni
 Roberta and Gerard Bessette
 Joseph and Kerry Biega
 Barbara and Barton Bienenstock
 James Blackburn
 Carol Blackwood
 S. Prestley and Helen Blake
 Joanne M. Blake
 William Blatchley
 Dr. and Mrs. Richard F. Bloom*
 Mr. and Mrs. G. Howard Blythe
 Robert C. and Ana M.
 Boissonneault
 Reverend and Mrs. Bomely
 John and Helene Bonin
 Dr. and Mrs. Harold D.
 Bornstein, Jr.
 Mr. and Mrs. Raymond W.
 Bousquet
 Attorney and Mrs. Peter F. Brady
 Peter and Elaine Brainerd
 Liliane T. Braman
 Gordon W. Braudaway*
 Mrs. Susan Bray
 Mary Breglio
 Ron Brennan
 William and MaryEllen Bridges
 Alison and Stephen Brinkmann
 Alice and Larry Brown
 George R. Brown
 John and Kathy Bryson
 Julie and Kevin Buchanan
 Joyce and Harold Buckingham
 Eugene and Ann Buckley
 Eileen Buckley
 Carla and Richard Bue*
 Mr. Paul H. Burnham and
 Ms. Karen A. Birck
 Ned and Christine Burt
 Barney Barker Oil Company
 Edward Cape
 Anne and Jim Carroll
 Mr. and Mrs. George Carroll
 Margaret H. Carter
 Robert and Carole Carter
 Michael and Lori Cartwright
 Mr. and Mrs. Howard Case
 Leon and Marilyn Case
 George and Frances Caspar
 Greg and Melinda Castanza
 Mr. and Mrs. John E. Cavanaugh
 Don and Joan Chamberlin
 Mr. and Mrs. Raymond A.
 Chappell
 Chestelm Health and
 Rehabilitation
 Mr. and Mrs. Herbert T. Clark, III
 Ruth Clark
 Peter and Marcelyn Clarke
 Barbara Greller Cohen and
 Harold Cohen
 Myron A. Cohen
 Patrick and Janet Colca
 Andrew and Elizabeth
 Comcowich
 Susan Connors and
 Anthony Lopez
 Tony Conti
 Kevin and Kate Conway
 Cornerstone Construction
 Services, Inc.
 Mr. and Mrs. Frank Coscina
 Donald and Sandra Costantino
 Martin and Margaret Coughlin
 Anonymous
 Alfred V. Covello and
 Carol L. Santry
 Sally and Tom Crawford*
 Mrs. Crispi
 Mr. and Mrs. Cyril Crocker
 Louise R. Crocker
 Dr. Amy L. Crockett
 Pam and Tim Cronin
 Donna and Alan Crossley
 Mr. and Mrs. Samuel D. Crum, Jr.
 Joan K. Curry
 Henry F. Curtis
 Michael and Peg Curtis
 Michael and Gail Cutler
 Gerard G. D'Ambrosio
 Stanley M. Dalrymple
 Maureen Dalton
 Eric and Patricia Daniels
 Susan and Joseph Daniels
 N. H. Davidson
 Franklin and Diane Davis
 Attorney and Mrs. Water
 DeAndrade
 Mrs. Patricia Deichmann
 Donald Delcore
 George and Louise Demakis*
 Gerard Demuth
 Dave and Roberta Denya
 Anthony and Karen DePaul
 Mr. and Mrs. Eugene Dessureau
 Sherrie Deveau
 Norma Diamond
Arthur Director +
 Mr. and Mrs. James N.
 Donaldson
 Joe and Mary Anne Dougherty
 Lois C. Dowd
 David and Deborah Dressler
 Herbert Drower
 Mrs. Debra Duncan
 Margaret and Tom Dunn
 Mary Jane Dunn
 Lisa Durland Cowles
 Reverend Gerald H. Dziedzic
 Peggy Eatherton
 Jim and Judi Elder
 J. Andrew Engelhardt
 Mr. and Mrs. James T. Entwistle
 Andy and Polly Erickson
 Liza and Jim Ervin
 Essex Hardware
 Robert M. Fechtor and
 Gilda S. Brock
 Rhoda and Arthur W. Feinstein
 Richard Feldman
 Dr. and Mrs. A. Ferguson III
 Dr. Michael Ferry and
 Ms. Cynthia Skinner
 Ann Field
 EMCOR Services - New England
 Mechanical
 Dr. and Mrs. William T. Fisher, Jr.



GOODSPEED MEMBERSHIP

DIRECTOR'S SOCIETY (\$250+) (cont)

- Dr. and Mrs. William Fitzgerald
Anonymous
Mr. and Mrs. William A. Flint, Jr.
Mr. and Mrs. Raymond Fornwald
Kenneth and Victoria Freed
The Honorable and
Mrs. Frederick A. Freedman
Bill Freeh*
Eula and Glenn Fresch
Mr. and Mrs. Frank Frey
Marsha L. Fried
Mr. and Mrs. Victor F. Fumiatti
Barbara and Ray Galloway
Fran and Prabhash Ganguli
Kenneth Bondi and
Nancy Garlock*
Brenda and Joe Garrison
Terry Gellin and Samuel Schragger
Ms. Diana Gernhardt
Philip Getter
Cherrie Gillis
Mr. and Mrs. T. Giusti
Mrs. Toby D. Goldfarb
Mr. and Mrs. Samuel Golding
Yale and Carolyn Gordon
Mr. and Mrs. Raymond Gorman, Jr. +
Thomas E. Gorman
Mr. and Mrs. Malcolm Graff
Bill Gratz and Jay Bruno
David and Denise Gravatt*
Joan Grinnell
Dave and Donna Groegler*
Mr. and Mrs. Thomas C. Gross
Alan and Patricia Gruber
Peter and Barbara Guerra
Beverly Guimond
Mark and Julie Haight
Mr. Clifford Hamilton
Carl Hanson
Mr. and Mrs. Arthur H. Harris, Jr.
Sue Hart +
Rebecca Harvey
Pat and John Hechavarria
Bob Heckler
Irene Herden
Austin Hersh and Family
Barton and Jacqueline Hessler
Arthur and Virginia Hetherington
Sandra S. Hewitt
Mrs. Inge Hieret
James and Martha Hisey
George and Joan Hogan
Patricia A. Holmes
Robin and Judi Honiss +
Denton and Joan Hopper
Anonymous
Harvie J. Houser
Ms. Emily-Mae Howard
Mr. Stephen W. Hubbard
Alan and Ann Hughes
Mr. & Mrs. and Mrs. Russell Hunter
Polly and Sam Huntington
Mr. and Mrs. Harold W. Hurlbutt
George E. Iadarola, Jr.*
Daryl and David Ifkovic
Lou Blumenfeld and
Jacqueline Isaacson
Matthew and Angela Jacobson
Kathy and Norm Jacques
N. S. Jason
Mark T. Jefferson*
The Jobson Family
Coral and Ron Jodice
Eric and Priscilla Johnson
Glen Johnson
Elaine Jones
Hugh Jones
Michael and Joyce Kai*
Arnold and Sheila Kaufman
Hali Keeler*
John and Betty Kelly
Mr. Arthur Kelsey
Amy Kessler and Daniel Bertram
Charles and Gretchen Kingsley
Michael J. Klingensmith and
Ruth A. Shields
Patty Knowlton
Dr. and Mrs. Lester D.
Kochanowsky
Kenneth Koe*
Hans and Christina Koehl
Mrs. Walter O. R. Korder
Jerry and Bunni Korman
Mr. and Mrs. John Krawski
Darlene F. Krenz
Douglas R. Krenz
James Kruk
Mr. David Ladd
Mr. and Mrs. Todd Laddis
Sheila Laing
Ruth Lambert and
Henry S. Harrison
Rev. Roger J. Lamoureux
Anonymous
Edward Lang
Ken and Barbara Larson and
Thelma and June
George and Mary Laursen +
Dr. and Mrs. Stanley Lavietes +
Mr. and Mrs. James Lawler*
Dr. and Mrs. Robert E. Lebson
Mr. and Ms. Robert Lee
Harmon and Elizabeth Leete
Mrs. Jane Leibowitz
David and Elizabeth Leigh
Joyce and John Lemega
Mr. and Mrs. Terrence T. Lescoe
Robin Lewis and Bob Rich
Robert and Katherine Lien
Mr. and Mrs. John A. Liljestrand
Lindquist Insurance Associates
Mr. and Mrs. William Longa*
Andrew and Florence Lozyniak
Robert and Karen Ludgin
Jocelyn Lynn
Mr. and Mrs. William C. Lyons
Mr. and Mrs. Ian G. MacDonald
Malcolm MacGruer
Emanuel and Irene Makiaris
Mr. and Mrs. James M. Makuch
Sharon Malone
Anita and William Mancoll
Carmela and Ronald Marino
Fred and Marie Martin
Mr. and Mrs. Jack Matava
and Family
Donna and Bill Matson
Mr. and Mrs. Frederick
Maynard, Jr.
Joseph Mayo
Don and Cynthia McCall
Kevin and Jean McCarthy
Paul and Jan-Gee McCollam
Karin and John McCormick
Barbara McCullough
Mrs. Virginia McCurdy
Sue and Neil McElroy
Mr. and Mrs. Victor McGrady
Kathryn and Jack McKeen
Thomas and Deborah McKernan
Mrs. John F. McManus, III
Rosemary McNerney
Anonymous
Mr. and Mrs. Jonathan Metcalfe
Mr. and Mrs. Edward Meyer
Mr. David Mika
Mr. and Mrs. George B. Miles
Jane Ann Miller



GOODSPEED MEMBERSHIP

DIRECTOR'S SOCIETY (\$250+) (cont)

- Jack and Donna Moffly
Meg and Scott Mokoski
Nancy O. Moreland +
Mr. and Mrs. Floyd A. Morley*
James C. Moyer
Kenneth and Nancy Mull
Agnes Murawski
Chuck and Galina Murphy
Mr. Ken Nasshan
Norman Needleman and
Jacqueline Hubbard
Stephen and Catherine Negri
Gail and Anthony Newman
Kristina Nilsson
Allen J. Novakouski and
Daniel J. Hutton
Mike and Gwen O'Connell
William and Carol O'Neill
John and Joan O'Reilly
Rea and Mary Ann Outman
Paul Palmer
Rob's Auto Service, Inc.
Anonymous
Lois and Donald Pascal
Fran and Bill Patsiga
David and Jo-Ann Pearson
Carol Pellegrine
Mr. and Mrs. Francis Pendola
Mr. and Mrs. Bryan Peretto*
Jud Perkins
Lyn Mathews Perrin
Virginia Perruccio
Paul Peszynski
Charles and Charlotte Peterson
Mr. and Mrs. Mark A. Peterson
Rod and Lucy Petrey
William and Andrea Phinney*
Dr. and Mrs. Dennis Pilarczyk
Wayne and Laurie Pipke
Chris and Beth Pitt
Mary and Lawrence W. Pocknett
Mr. and Mrs. Myron J. Poliner +
Mark and Traci Polinsky
Milton Porter & Alma Derway
Mr. and Mrs. Robert W. Pratt, Jr.
Annella C. Preble
Patti Proctor
Richard and Pamela Rapacz
Mr. David M. Rathbun
Michael and Erika Reen
Cynthia and Jack Rehm
Alvin and Lois Reiner
**Dr. and Mrs. Howard L.
Reuben +**
Anonymous
Mr. and Mrs. Jeffrey D. Robbins
Peter and Terry Roberts
Toni Robinson and Michael Plouf
Alix Rokita
Gualberto Ruano, M.D.
Roger and Sheila Rubitz*
Anonymous
Jeffrey
Neil and Lynn Ruenzel
Mr. and Mrs. Frank E. Rutan
Ms. Maggie Ryan
Timothy J. Ryan
Anne D. Ryder +
Harold and Dorothy Safalow
Ann P. Sawicki
Lawrence A. Sax
Pietrina and Craig Saxton
Anonymous
William J. Scheide
Mr. and Mrs. Alan N. Schiff
Mr. and Mrs. Stephen Schwartz
Robert and Linda Lee Scrivener
Kathryn Smith and
Andrew Seddon
Mr. and Mrs. Benjamin Sevitch
Mr. and Mrs. Alan N. Schiff*
Sonia and Mark Shipman
Donald and Karen Shirer
Francis and Lorette Simcic*
Mr. Robert D. Sinagra
Mr. and Mrs. David Sloan
Lon and Susan Smith
Timothy and Sue Smith
Stephen Smrecek
Clifford H. Snow, Jr.*
Alvin and Cecile Sobol
John Spaargaren
Mr. Harold S. Spitzer and Mr.
Thomas A. Martin
Mr. and Mrs. Edward Stack
Ms. Annemarie Stanford
Gloria Star and Richard Roess
Alex and MaryAnn Stein*
Joan and Tom Steitz
Joan and David Stewart
Steven Sudigala*
Hilja Sulev
Mr. and Mrs. William J. Summa
Frederick A. Sundberg
Carol Z. Sundlin
Edythe Sussman
Frederick and Patricia Swan
Mr. and Mrs. Richard W. Swan
Donna and Brad Tafel
Charleen Taylor
Peter H. Taylor
Mr. Tom Tenney
Lincoln and Elizabeth Thompson
Mark and Lee Tice*
Mr. and Mrs. John M. Timken
Brian Timura, MD
Charles and Lida Tingley
Joseph and JoAnne Tobin
Mr. and Mrs. Anthony Torre
David and Lisa Totman
Neal Tuohy, Jr.
Bruce C. Tuthill & Ellen M. Lee
Gloria Tuttle
Richard and MaryAnn Valinski
Janis and Jeff Vannais
Ragged Rock Marina
Mrs. Josiah G. Venter +
Robert and Virginia Vocelli
Mr. and Mrs. Edward J.
Voskowsky
Dr. and Mrs. Milton Wallack
Robert F. Walleck and
Joan Smith-Walleck*
Beverly and Matthew Walton*
Jerry and Linda Wanosky
Burton Warner
George and Shirley Warner
Mr. and Mrs. Alan Wasserman
Mr. Adam Weinreb
Marvin Weinstein
Bob and Roz Weinstein
Mrs. Kenneth A. Welch
Mr. and Mrs. Richard M. Wenner
Dr. and Mrs. Michael J. Werle
Jeanne Wheeler
Michael A. Wheeler
Carol A. Wiggins +
Cynthia Wilcox
Babs and Kate Wilkinson
Mr. and Mrs. Carl P. Wilson
Thomas and Andrea Wing
Dr. and Mrs. Marvin Wisch
Mr. Michael Wolchesky
Janne and Donald Workman
Timothy and Susan Wrinn
Mr. and Mrs. William A. Wurts
Robert and Henrietta Yeaw
Jim and Evelyn Young
March and Lorry Young
Paul Yuhasz and Cindy Pope
Ms. Anne Godbout Yurch
Francis and Patricia Zak
Stephen Zebrowski
John and Diane Zukowski



GOODSPEED MEMBERSHIP

Goodspeed Musicals acknowledges the following corporations that have provided matching gift contributions for Goodspeed Members this season. Members with an asterisk () next to their names have received these donations from their employers.*

ACE Charitable Foundation, Matching Gifts Program	FleetBoston Foundation Matching Gifts	Mobil Foundation, Incorporated
Aetna Foundation	GE Foundation	NRG Energy Inc.
American International Group, Inc.	General Re Corporation	Occidental Petroleum Corporation
Amica Companies Foundation	HP Employee Charitable Giving Program	Pfizer Foundation Matching Gifts Program
Bank of America Matching Gifts	Hudson City Savings Bank	Phoenix Foundation
Blue Hills Bank Charitable Foundation	IBM Matching Grants Program	Matching Gifts
Chubb & Son	John Hancock Matching Gifts Program	Pitney Bowes Giving Station
CIGNA Corporation	Johnson & Johnson	Prudential Foundation
Coviden Employee Matching Gift Program	Lane Industries, Incorporated	Schneider Electric/Square D Foundation
Diageo North America	Lincoln Financial Group Foundation	Stanley Black & Decker, Inc.
Dominion Foundation	Macy's Foundation	Travelers Insurance Company
Ensign-Bickford Foundation	The Meredith Corporation	Unilever United States Foundation, Inc.
ExxonMobil Corporation	Foundation Employee Contribution	United Technologies Corporation
Federated Department Stores, Inc		

Goodspeed Musicals gratefully acknowledges the following staff for contributing to the 2013 Employee Campaign.

William D. Addison	Gloria J. Gorton	Linda Misarski
Nancy Altschuler	R. Glen Grusmark	Chris Mollen
Robert C. Alwine	Elisa Hale	Stephen Moore
Cinda A. Barbuto	James Hesse	Sarah Moulton-Lieberman
Dawn Barlow	Jay and Donna Lynn Hilton	William Nivison
Michele R. Baumann	Elizabeth Jordon	Michael O'Flaherty
Robert A. Bennett	Troy A. Junker	Rose Phillips
Linda Benson	Kimberly A. Kane	John Riccucci
Edward C. Blaschik	Harriett Kittner	Joshua S. Ritter
Abigail Boone	Cindy Kubala	Shannon Robbins
Stacy Booth	Ellen Lampros	Marilyn Rybak
Sara Breen	Mike Lastella	Roger-Paul Snell
Lori Cartwright	Ryann D. Lee	Katie Sprow
Lynn Collins-Rucker	Shanna Lisitano	Donna Tafel
Joanne D'Amato	Patti Lizotte	Beryl Thorpe
Matt Francis	Suzanne Mazzotta	Carla Tiezzi
Lou Fuchs	Greg McGuire	William Todd
Elizabeth A. Fuqua	Kristan McLaughlin	Barbara Wilkinson
Paulette Ganoe	Dan McMahan	Alicia Wilmes
Erica J. Gilroy	Mary Miko	Paul Zajac

For a complete membership listing, including Supporting (\$150+), Family (\$100+) and Associate (\$50+) members, please visit our website at www.goodspeed.org.

OUR 2013 FALL PRODUCTION!



CONNECTICUT
GILBERT
&
SULLIVAN
SOCIETY



will be presenting

The YEOMEN
of the GUARD

SAT., OCT. 19, 7:00PM AND SUN., OCT. 20, 2:00PM

AT

VALLEY REGIONAL HIGH SCHOOL
256 KELSEY HILL ROAD
DEEP RIVER, CT 06417

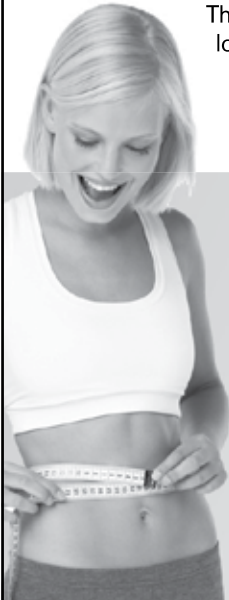
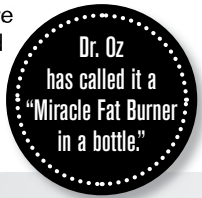
1-800-866-1606  www.ctgands.org

Get Paid to Lose 5 to 7 lbs Per Week!

The makers of SimplePure's Raspberry Ketone are looking for real testimonials from real people and

 will pay you \$5 per pound 

to meet or exceed your weight loss goal.



No expensive meals to buy.
.....

No strenuous workouts.
.....

Take one tablet before each meal
and record your progress – *it is that easy!*

Call Now!

866-981-2994

Space is limited. First 100 callers will be accepted.





GOODSPEED MUSICALS STAFF

ADMINISTRATION

Harriett Kittner *General Manager*
 Edward C. Blaschik *Theatre Manager*

Donna Tafel *Assistant to Michael P. Price*

William F. Nivison *Director of Finance*
 Stacy Booth *Accounts Payable Manager*
 Joanne D'Amato *Payroll Manager*

Nancy Altschuler *Director of Development*
 Sara Breen *Manager of Corporate and
 Foundation Relations*
 Gloria Gorton *Director of Major Gifts*
 Mary Miko *Special Events Coordinator*

Dan McMahon *Director of Marketing and
 Public Relations*
 Lori A. Cartwright *Marketing Manager*
 Elisa G. Hale *Public Relations Manager*
 Katherine Griswold *Creative Content Manager*
 Charlie Siedenburgh *National Press Representative*
 Diane Sobolewski *Official Photographer*
 Adrian Elise Natale *Marketing Intern*

Michele R. Baumann *Member Relations Manager*
 Shannon Robbins *Membership Secretary*

Cinda Abercrombie Barbuto *Ticket Sales/Box Office Manager*
 Roger-Paul Snell *Assistant Box Office Manager*
 Rachael N. Carlson,
 Shanna Lisitano *Box Office Supervisors*
 Peter W. Carey, Bethany Hepp,
 Catherine Joseph, Barbara Wilkinson,
 Alicia Wilmes *Box Office Representatives*

Kristan McLaughlin *Company Manager*
 Jen Levine *Assistant Company Manager*
 Lauren Greene,
 Meaghan McLaughlin *Company Management Apprentices*

Joshua S. Ritter *Education & Library Director*
 Christine Hopkins *Education & Library Assistant*

Jeffrey Mays *Systems Administrator*
 Linda Benson *Receptionist*

Paulette C. Ganoe *Audience Services Manager*
 Beryl W. Thorpe, Sarah Moulton-Lieberman,
 Kathy Raczka *House Managers*
 Barbara Randlett, Betty Fuqua,
 Leigh Beatty, Cari McManus,
 Diane Rottmann, Rachel Bolles *Assistant House Managers*
 Bob Bennett, David Loffredo,
 Pat Logan, Paula Moriarty *Bartenders*

Marilyn Rybak *Building Services Assistant*
 Paul Zajac *Building Services Supervisor*
 Jonathan Cubeta,
 Stephen Moore *Building Services*
 ServicesMaster Clean *Custodial Services*

PRODUCTION

Matt Francis *Technical Director*
 Jason Rasinowich *Assistant Technical Director*
 Chris Phillips *Master Carpenter*

A.J. Kellison, Eric Miller,
 Chris Mollen, James Varkala *Shop Carpenters*
 Andrew Smith *Journeyman Carpenter*

Carla Tiezzi *Charge Scenic Artist*
 Miranda Casler *Staff Scenic Artist*
 Patti Lizotte *Staff Scenic Artist/
 Administrative Assistant*

Ellen Lampros *Props Manager*
 Troy A. Junker *Master Artisan*

Lou Fuchs *Props Carpenter*
 Abigail Boone *Props Run Crew Head*

Cindy Kubala *Costume Director*
 Kathleen Gephart *Assistant Shop Manager/Draper*
 Anna Blankenberger *Costume Shop Assistant*
 Erica Gales, Stephanie Taff *Drapers*
 Josie Staudmyer *First Hand*
 Kaitlyn Williams *Stitcher*
 Chelsea Tuffy *Stitcher/Norma Terris
 Wardrobe Supervisor*

John Riccucci *Wardrobe Master*
 Gina Ferrucci *Wigs & Hair Supervisor*

Jay Hilton *Lighting and Sound Supervisor*
 Michael Lastella *Master Electrician*
 L. Clay Little *Production Electrician*
 Greg McGuire *Production Sound Engineer*

Erica Gilroy *Assistant Production Manager*

Dan Pardo *Music Assistant*
 Aidan Carr *Music Apprentice*

NJaye Olds *Costume Collection Curator*
 Stephanie Wooley *Assistant to the Curator*
 Felia Williams *Design Assistant to the Collection*
 Dawn Barlow,
 Breeanna Korcak *Costume Collection Assistant*

FOR THIS PRODUCTION

Thomas Rowell *Assistant Director*
 Eloise Kropp *Assistant Choreographer*
 Ryan Scott *Associate Scenic Designer*
 Tina McCartney *Assistant Costume Designer*
 Jeffrey Small *Assistant Lighting Designer*
 Nick Eilerman *Assistant to the Producers*
 Russ Arnett *Stage Carpenter*
 Alanna Manicalso, Ryann Lee *Props Artist*
 Emilia Corbin *Draper*
 Chee Lee, Brian Quiricone *Carpenter*
 Becca Herman,
 Sarah Testerman *Production Assistants*
 Caleb Caudill *Directing Observer*
 Kate Crescimanno-Roth *Electrician*
 James Stenborg *Music Copyist*
 Molly Sturges *Piano Technician*
 John Cowles,
 Seams Unlimited Ltd. *Additional Costume Construction*
 Arnold S. Levine *Additional Millinery*
 Julianne Kroboth *Cast Maker*

David Blaakman, April Chateaufeuf,
 Catherine DeCesare, Annie Egan,
 Ryann Lee, Nicholas Meloro,
 Arix Reynolds, Phyllis Tella,
 Amy Wortman *Scenic Artists*
 Vanessa Bellini, Margaret Dolben,
 Katie Lauren Goldstein, James Hesse,
 Alyssa Opishinski, Rose Phillips,
 Greg Scheiber, Ashley Simeone,
 Katie Sprow, Beth Strothmann,
 Blaine Telfow, Leandra Watson,
 Jared B. Wolf *Apprentices*
 Samantha Brewer *Elaine McKirdy Student Apprentice*

SPECIAL THANKS:

Jilliana Anderson, Bank Street Cobbler, Peg Carbonneau,
 Diversified Diners, Lorence Sign Works, Michelle McEwen,
 Michaels of Waterford, Priam Vineyards

IN APPRECIATION

Goodspeed Musicals would like to thank the following for their contributions to our productions: all who volunteer their time and talents to Goodspeed, the Goodspeed Opera House usher and gift shop staffs, the Goodspeed Guild, and Mae Wantanabe of ZCMI Flower Shop.



for your INFORMATION

Box Office

Goodspeed Opera House
6 Main Street, East Haddam, CT 06423-0392
860.873.8668 • boxoffice@goodspeed.org

Hours:

Monday & Tuesday: 10 a.m. to 5 p.m.

Wednesday & Thursday: 10 a.m. to 8 p.m.

Friday & Saturday: 10 a.m. to 8:30 p.m.

Sunday: 10 a.m. to 7 p.m.

Follow us on goodspeed.org



Infra-red Hearing System:

The Goodspeed Opera House offers the Sennheiser infra-red hearing system to assist hearing-impaired patrons. Free headsets are available from the Box Office. Goodspeed Musicals gratefully acknowledges the Carol L. Sirot Foundation for underwriting.

Goodspeed Guild:

The Goodspeed Guild is a volunteer organization dedicated to supporting Goodspeed Musicals' operations and productions. Since 1975 it has provided services to artists, patrons, and staff on a year-round basis, while offering its members the opportunity to become part of the behind-the-scenes activities at Goodspeed. To find out about volunteer opportunities that fit your interests and schedule, visit our website at goodspeed.org or contact Amy Campbell at 203.494.7328.

Sets, costumes, and props are designed especially for the Goodspeed Opera House and are built in Goodspeed Musicals' shops.



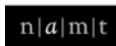
Goodspeed Musicals is a professional theatre operating under an agreement between the League of Resident Theatres and Actors' Equity Association, the Union of Professional Actors and Stage Managers in the United States.

Orchestra members are represented by The Connecticut Valley Federation of Musicians, AFM Local 400.



The scenic, costume, lighting and sound designers in LORT Theatres are represented by United Scenic Artists, Local USA-829 of the IATSE.

Goodspeed Musicals is a member of The League of Resident Theatres.



NATIONAL ALLIANCE
for MUSICAL THEATRE



The Director and Choreographer are members of the Society of Stage Directors and Choreographers, Inc., an independent national labor union.

LOVE THE ARTS?

Wherever You Are, Find A Great Performance!



SPECIAL OFFERS
sent directly
to your inbox.



REMINDERS
that you request
sent directly to your
inbox two weeks
before the performance.



MONTHLY ALERTS
for upcoming
performances
sent directly to
your inbox

ARTSFREEPRESS

→ Your Arts. Your Reviews. ←
BROUGHT TO YOU BY ONSTAGE PUBLICATIONS

The Lace Factory Events

farm fresh food...



...made with love



860.388.9999
cloudnynecatering.net
thelacefactory.com



C
L
O
U
D
N
I
N
E
&
T
H
E
L
A
C
E
F
A
C
T
O
R
Y

KNOCK. KNOCK.

The Care of a Hospital.
The Comfort of Home.


When you choose Middlesex Hospital Homecare, you'll get all the expert care and compassion you've come to expect from us—without having to leave your home. We provide a full range of in-home services 24 hours a day, 7 days a week throughout Middlesex County and beyond.

Healing in the comfort of your own home—that's
The Smarter Choice for Care.

For more information, please call 860-358-5600.



The Smarter Choice for Care

 **MIDDLESEX HOSPITAL**
Homecare

Call today for a tour: 860-345-3779



Resident Shirley Cannon with daughter Melinda Kingsbury pruning flowers in the courtyard.

There's no place like home. And now my home is at The Saybrook at Haddam.

Life at The Saybrook at Haddam reminds Shirley of the home and garden she enjoyed in Kansas. Now, she still has an active lifestyle, but no longer worries about maintaining a house, preparing meals, or being alone. With her daughter nearby in Essex, Shirley can relax, knowing there truly is no place like home.

For independent residents, The Saybrook at Haddam offers gracious retirement living at an unmatched value.

For residents who need more assistance with daily living, the professional, experienced staff is ready to meet their needs.

Also featuring **Safe Harbor**, a special care program for residents with Alzheimer's or dementia.



An Assisted Living Retirement Community
1556 Saybrook Road, Haddam, CT

www.thesaybrookathaddam.com

The one dentist...

... dedicated to *Advanced Dental* results—and your concerns about dentists!

Call for a free consultation—or visit our website to *see and hear* how Dr. Peter Nelson has improved the smiles—and lives—of many others! The healthy, bright, *attractive* smile you've dreamed of is now just a web-visit or phone call away.



Advanced
COSMETIC
DENTISTRY

717 Newfield St., Middletown, CT
860-347-1227

www.TheOneDentist.com

CONNECTICUT CONCERT OPERA

DORIS LANG KOSLOFF, ARTISTIC DIRECTOR

COME AND BE INSPIRED!

Pagliacci *Plus*



I PAGLIACCI

AND

THE LITTLE HARLEQUINADE



Friday November 1 at 7:30 PM
Sunday November 3 at 2:00 PM

For tickets, visit <http://www.showclix.com/> or call 1-888-718-4253

For information call (860) 722-2300 or visit us at <http://www.connconcertopera.org/>

The Hoffman Auditorium
University of St. Joseph
1678 Asylum Ave
West Hartford, CT

All Tickets \$25



2013 SEASON

TICKETS ON SALE NOW!

I LOVE YOU, YOU'RE PERFECT, NOW CHANGE

Book by Joe DiPietro, Music by Jimmy Roberts
SEPTEMBER 25TH - OCTOBER 13TH

THE SEVEN YEAR ITCH

By George Axelrod
OCTOBER 30TH - NOVEMBER 17TH

THE BELLS OF DUBLIN

By Jacqueline Hubbard
DECEMBER 12TH - DECEMBER 22ND

GIVE THE GIFT OF THE PLAYHOUSE THIS HOLIDAY!

NEED A PRESENT THAT IS PERFECT FOR EVERYONE? PURCHASE
A GIFT CERTIFICATE IN ANY AMOUNT BY CALLING 860.767.9520.
GIVE THE GIFT OF GREAT THEATRE THIS YEAR!

103 MAIN STREET | IVORYTON, CT 06442 | 860.767.7318
IVORYTONPLAYHOUSE.ORG



It's shopping
with a heaping order of
WOW on
the
side.

After you indulge your good taste at our unique collection of shops, satisfy your taste buds at one of our fine restaurants. It's a must-have experience you won't want to miss. Call 1.888.226.7711 or visit mohegansun.com.





BUSINESS EVENTS PRIVATE PARTIES WEDDINGS OFF-SITE CATERING

Your event is the most important that we will ever create.



55 BRIDGE ROAD
HADDAM, CT 06438
860.345.4100

www.theriverhouse.com

Great performance!

Thank you Goodspeed for sharing your talents in this fabulous production!

At SKY Investment Group, we know great performance when we see it. Every day, we custom-build portfolios to help high-performing families pursue their passions.



SKY Investment Group LLC
One Financial Plaza, Suite 2010
Hartford, CT 06103 • (860) 761-9700

Bob Bingham • Bill Newman • John Wright

www.skyig.com



SAVE 69%
on the Grilling Collection



Premium Quality Guaranteed! Omaha Steaks brings you the finest steaks and gourmet favorites available anywhere. Plus, The Grilling Collection offers you something to please all your family and friends. **Order today!**

The Grilling Collection 45102FWE

- 4 (5 oz.) Top Sirloins
- 4 (4 oz.) Boneless Pork Chops
- 2 (4 1/2 oz.) Stuffed Sole *with Scallops & Crabmeat*
- 4 Boneless Chicken Breasts (1 lb. pkg.)
- 8 (3 oz.) Gourmet Jumbo Franks
- 4 Stuffed Baked Potatoes

Save \$116⁰¹

Reg. ~~\$166.00~~..... **Now Only \$49⁹⁹**

2 FREE Gifts

Order now and we'll send a...
FREE 6-piece Cutlery Set & FREE Cutting Board
to every shipping address!

Limit of 2 packages. Free Gifts included per shipment. Standard S&H applied per address. Expires 4/30/13.



©2013 OCG OmahaSteaks.com, Inc. 15118

To Order visit www.OmahaSteaks.com/offergc63 or Call 1-888-903-2801

Belong | Grow | Succeed



Franklin Academy

*Serving Students with Nonverbal
Learning Differences and Asperger's*

High School College Preparatory 8th-12th

Summer Sojourn Experiential Learning

College Transitional and Associate Degree

140 River Road | East Haddam, CT 06423
860-873-2700 | www.fa-ct.org

Riverway
STUDIO

A versatile music production studio featuring
award-winning and Grammy®-nominated work.

- Composition, arrangement & music production for TV,
Film & Theatre • Blind CD Recording • Solo Projects
• Voiceovers • Demos

Riverway Recording Studio, LLC

860-873-3404

www.riverwaystudio.com
email: ra@riverwaystudio.com
Hours by Appointment Only



WESTBROOK INN B&B

2 Historic Inns - Walk to Beaches & Downtown!

800-342-3162

westbrookinn.com

Full Breakfast Daily
Sat. Happy Hour
Online Reservations

976 Boston Post Rd., Westbrook, CT 06498

BUSHNELL HOUSE INN

BushnellHouse.com



Kenneth Barber, Esq.

Kenneth Barber & Associates Attorneys at Law

www.barber-law-firm.com Call Today! 860.267.2263



AREAS OF PRACTICE

Estate Planning • Probate • Family/Divorce
Real Estate • Personal Injury

Real People...Real Solutions...Your Attorneys

Order Mouthwatering Gifts for Any Occasion

100% SATISFACTION GUARANTEED

giant strawberries | #1 seller | over 35 million berries dipped



Save 20%*

Treat anyone in
your life for less!



To redeem this offer visit www.Berries.com/fancy
or call 888-706-3918



*20% off discount will appear upon checkout. Minimum product purchase of \$29.00. Discounts do not apply to gift cards or certificates, same-day delivery, shipping and handling, taxes or third-party hosted products (e.g. wine) and cannot be combined with other offers or discounts. Discounts not valid on bulk or corporate purchases of 10 units or more. Offer expires: 11/15/13

THE LESS ART
KIDS GET, THE
MORE IT SHOWS.

ART

ASK FOR MORE.

Did You Know?

Young people who participate in the arts for at least three hours on three days each week through at least one full year are:

- **4 times** more likely to be recognized for academic achievement
- **3 times** more likely to be elected to class office within their schools
- **4 times** more likely to participate in a math and science fair
- **3 times** more likely to win an award for school attendance
- **4 times** more likely to win an award for writing an essay or poem



AMERICANS
for the ARTS

GET INVOLVED

www.americansforthearts.org/public_awareness





Audition Your New Ride

As part of the 'Jon Lorensen Advantage', we offer eight exclusive value guarantees that save you **OVER \$1500** just for buying from us!

The Jon Lorensen
Advantage

- Automatic Warranty Extension
- 10-day Exchange Policy
- Your First Oil Change FREE
- Your First Ding Repaired FREE

www.lorensen.com

**Westbrook
Honda**

860.399.9300

Flat Rock Place • Exit 65 Off 1-95 • Westbrook

**Westbrook
Toyota**

860.388.6991



Old Saybrook Chrysler Dodge Jeep

860.388.5757 • 255 Middlesex Tpke
Exit 2 Off Rt 9 • Old Saybrook Auto Mall

who knew a
SHOPPING SPREE
was sitting in *your*
jewelry box?

Sell the jewelry, diamonds and watches you no longer wear to Becker's. Immediate payment means there's no waiting to convert your old treasures into new opportunities.



Whether selling a half-carat diamond or an entire estate, Becker's provides you with the most knowledgeable jewelry experts, offering the best value for your items.

Now serving CT in 19 locations: Clinton, Middletown, Avon, Branford, Bristol, Gullford, Manchester, Newington, New Haven, New Milford, Norwich, Orange, Southington, Torrington, Wallingford, Waterford, West Hartford, Willimantic, and Windsor Locks

BECKER'S
DIAMONDS & FINE JEWELRY

65 LA SALLE ROAD, WEST HARTFORD CENTER
1-888-BECKERS · WWW.BECKERS.COM
OPEN LATE THURSDAYS · FREE PARKING